



Oil and Lube

Tech Set

80 Piece Lube Tech Starter Set

SKU 227302 24965 **1,349⁹⁹**

Over 80 of the most popular tools used by Lube Techs. Includes hand tools, battery and tire service tools, along with specialty oil filter wrenches to service late model cars and trucks. **BONUS TOOL CART:** All these items come in an easy to maneuver, secure four drawer roll cart.



BONUS

4 Drawer Service Cart #24962 sku512949 with purchase of 80 Piece Lube Tech Set #24965 sku227302 **\$329.99 VALUE**

Oil Filter Crusher

Industrial 10-Ton Oil Filter Can Crusher

SKU 990215 RANRP20FC

1,374⁹⁹

- Reduces the Size of Used Oil Filters to One Fourth of Their Original Size. An Integrated Collection Chamber and Collector Down-Spout Tube Allows Quick Recovery of the Oil for Easy Disposal to a Drum or Bulk Container
- Save on Disposal Costs and Storage Space
- Fulfills EPA and Other Mandated Environmental Standards
- Reduce Filter Size By 75% and Remove Over 95% of the Residual Oil
- 12-1/2" Diameter Cylinder Provides 20,000 Lbs. Crushing at 175 PSI



Toyota & Lexus Oil Filter Cap Wrench

SKU 255634 25451 **19⁹⁹**

- 64.5mm x 14
- Applications include: Toyota and Lexus



Hyundai and Kia Oil Filter Cap Wrench

SKU 255659 25454 **19⁹⁹**

- 88.8mm x 15
- Applications include: Hyundai and KIA



Mercedes, Ford, Dodge, Mazda, Volkswagen, Porsche, Toyota, Lexus and Harley Davidson Oil Filter Cap Wrench

SKU 255669 25452 **19⁹⁹**

- 74.2mm x 14



BMW and Volvo Oil Filter Cap Wrench

SKU 255675 25453 **24⁹⁹**

- 86.8mm x 15
- Applications include: BMW and Volvo



Volvo/BMW Oil Filter Cap Wrench

SKU 383456 25408 **19⁹⁹**

- 86.5mm, 16 Flats
- Fits 2006 BMW Series (E90) and all Volvo cars (except 2005 40 and 50 Series) 1999-2005



Oil Filter Wrenches



TPR Handle Swivel Oil Filter Wrenches

- SKU 965869 25373 **9⁹⁹** STORE STOCK
- SKU 964999 25370 **9⁹⁹** STORE STOCK
- SKU 965002 25371 **9⁹⁹** STORE STOCK
- SKU 965003 25372 **9⁹⁹** STORE STOCK

- 1" Wide Stainless Steel Band for Strong Grip
- Dimples in Band Bite into Filter for Non-Slip Removal
- Swivel Handle for Hard to Reach Filters

Import Oil Filter Wrench

SKU 297190 25128 **5⁹⁹**

- Uses 3/8" Drive
- Fits Oil Filters 2-1/2" to 3-1/8"



3 Legged Filter Wrench

SKU 231212 25413 **14⁹⁹**

- Range: 2-1/2" - 4-1/2"



3 Legged Filter Wrench

SKU 114009 25017 **9⁹⁹** STORE STOCK

- Fits Import Cars
- Fits Spin-on Filters 2-1/2" - 3-7/8"



8-in-1 Swivel Wrench Metric

SKU 110283 25377 **14⁹⁹**

SAE SKU 110284 25378 **14⁹⁹**

- Features Magnet to Hold Drain Plugs or Nuts
- Metric: 8 Socket Sizes in One Tool: 12, 13, 14, 15, 16, 17, 18 and 19mm
- SAE: 8 Socket Sizes in One Tool: 3/8", 7/16", 1/2", 9/16", 5/8", 11/16", 3/4" and 13/16"



Oil Filter Cap Wrench for Dodge

SKU 222532 LIS34000 **10⁹⁹**

- Fits Threaded Plastic Oil Filter Caps on Newer Dodge V8 Engines

Oil Filter Pliers

SKU 141500 25320 **9⁹⁹**

- Slip-Joint Handle 2-1/2" to 4-5/8"
- Jaw Teeth for Sure Grip



Swivel Jaw Oil Filter Wrench Pliers

SKU 265115 25321 **39⁹⁹**

- Jaws Swivel 90° and Adjust to 4 Positions in 30°
- Range from 2-1/4" to 4-3/4" (57mm to 120mm)



Oil Filter Pliers

SKU 344320 25449 **16⁹⁹**

- Fits Filters 4-3/4" to 6"

7 Piece Oil Filter Removal Socket Set

SKU 191682 27197 **49⁹⁹**

- 3/8" Drive
- Set Includes: 24mm for Cadillac 36, 27mm for Mercedes A Class, VW, 2.8L, 3.2L and 3.6L V6 Cadillac CTS, STS, SRX, Buick Rendezvous Ultra, Buick Lacrosse CXS, Saturn L3000, SAAB 9-5 and Mercedes 1.8L, 29mm for Dodge Cummins Fuel Filter Housing, 30mm for Korean Cars, 32mm for GM Ecotec, 2.0L, 2.2L, and 2.4L Four Cylinder Oil Filter Housing; Some Saturn and SAAB, 35/36mm for Ford 6.0L Diesel Fuel and Oil Filter Housing, Mini Cooper and Some BMW Oil Filter Housing and Mack Truck Oil Filter Housing, 38mm for Vauxhall/Vectra 2.0L Diesel Engine



3 Piece Low Profile Oil Filter Socket Set

SKU 094803 27204 **20⁹⁹**

- Includes 27, 32 and 36mm
- 3/8" Drive
- 27mm for Cadillac STS 3.2L and Mercedes Benz 1.8L
- 32mm for GM Ecotec 2.2L and SAAB
- 36mm for BMW M52, M60, M62, M70 and M73, Mercedes Benz OM604, 605 and 606, Audi VR6



Mercedes and Smart Car Oil Filter Socket

SKU 255714 25450 **7⁹⁹**

- 27mm
- Applications include: Mercedes and Smart Car



32mm Oil Filter Socket

SKU 110281 25410 **7⁹⁹**

- Removes and Installs Oil Filters on 2.2 Liter GM Ecotec Engines
- Use with 3/8" Drive



36mm Oil Filter Socket

SKU 110279 25411 **8⁹⁹**

- 36mm
- Applications: GM Ecotec Engines



10 Piece Cap Filter Wrench Set

SKU 900828 27196 **42⁹⁹**

- 10 - 3/8" Drive Cap Oil Filter Wrenches
- Fits 95% of Domestic and Import Automotive Applications
- Includes: 65/67mm - 14 Flutes, 80mm - 15 Flutes, 68mm - 14 Flutes, 86mm - 16 Flutes, 74/76mm - 15 Flutes, 93mm - 15 Flutes, 76mm - 14 Flutes, 93mm - 36 Flutes, 76mm - 30 Flutes, 100mm - 15 Flutes

Automatic Transmission Service Equipment



Transmission Fluid Exchanger

- On Board Battery
- No Co-Mingling of New and Used Fluids
- Power On/Off Switch Prevents Battery Arching Hazard
- Level Sensor Technology, Never Needs Calibration
- Precise Fluid Measurement to the Tenth of a Quart
- High Output, Controlled Drainage at 3 Gallons Per Minute
- 32 Quart New and Used Fluid Tanks
- External Mounted Filter for Easy Maintenance

ATF1

SKU 112434 SYM30110000 **4,799⁹⁹**

- Cooler Line and Dipstick Modes of Operation
- Adapter Kit Included

ATF2

SKU 112457 SYM30120000 **3,999⁹⁹**

- Dipstick Mode of Operation



Automatic Transmission Fluid Exchanger

SKU 534584 RTIATX-2 **3,924⁹⁹**

- Fast, Automatic and Accurate Fluid Exchange!
- Digital Weight Scale
- Multi-Fluid Capability
- Fast 2-5 Minute Average Exchange; Fluid-Flow Direction Indicated
- Diagnostic Pressure Gauge



Transmission Fluid Exchanger

SKU 221189 92500 **4,099⁰⁰**

- Three Modes of Operations: Dipstick Only, Cooler Line, or a Combination Of the Two!
- Exchange Accuracy Approximately +/- 1/4 Qt
- 32-Quart Supply Tank; 34-Quart Waste Tank
- Complete Set Of Cooler Line Adapters for Most Foreign and Domestic Vehicles



Automatic Transmission Refill System

SKU 265092 MITMV6410 **299⁹⁹**

- Dispenses Fluids Under Pressure for Continual Flow to Top-Off or Refill Sealed Automatic Transmissions
- Includes: Reservoir Lid with Integrated Manual Pump, Pressure Gauge, and Pressure Relief Valve, 5' Fluid Dispensing Hose, MVA5800 ATF Refill Adapter Kit, Fluid Dispensing Wand and Hanging Hook

ATF Adapter Kit

SKU 972278 MITMVA7216 **164⁹⁹**

- Quick-Change Coupler Allows Fast Adapter Changes and Brass Ball Valve Controls the Flow of Fluid
- Ten (10) Adapters Fit Ford, Toyota, BMW, Honda, Nissan, VW, Audi and Mercedes Transmissions
- Connects Directly to MV7201 Fluid Evacuator Plus



Oil and Lube

Oil Drains

OEM TOOLS

8 Gallon Drain

SKU 383454
25896

69⁹⁹

- 8 Gallon Oil Drain



18 Gallon Drain with Pump

SKU 383453
25897

139⁹⁹

- 18 Gallon Drain with Pump



LINCOLN

BONUS Grease Gun
(LIN1142) with Purchase of
LIN3601 | SKU 988882
\$26.99 Value

18 Gallon Rolling Oil Drain with Air Evacuation

SKU 988882
LIN3601

219⁹⁹

- All-Steel Design Includes Reinforced Caster Supports
- 14" Telescoping Bowl; Range of 45" to 72"
- Preset Air Regulator (Up to 150 PSI)

Oil Drain Accessories

No Splatter Pad - 15"

SKU 080548
LIS38750

10⁹⁹

- Floors and Work Area from Messy Oil Splatter
- Insert Pad in Funnel or Oil Pan Before Oil Change in Transmission Drain Funnels or Larger Oil Drain Pans to Eliminate Oil Splatter
- Porous Material Allows Fluid to Quickly Pass Through Into Funnel or Pan



No Splatter Pad - 22"

SKU 080574
LIS38780

25⁹⁹

- Protects Floors & Work Area from Messy Oil Splatter
- Insert Pad in Transmission Drain Funnels or Larger Oil Drain Pans, Before Oil Change to Eliminate Oil Splatter
- Porous Material Allows Fluid to Quickly Pass Through Into Funnel or Pan



JD JohnDow Industries

17 Gallon Steel Low Profile Gravity or Waste Oil Pump Assist Oil Drain

SKU 360666
DOWJDILP4

529⁹⁹

- 25-Gallon Measured Capacity
- Low-Profile Drain (9") Fits Under Most Trucks
- Size 48"L x 25"W x 9"H
- 38" T-Handle Folds Down Flat for Easy Storage



- Drain Can Be Emptied By Gravity Drain, Evacuation Pump or Air Evacuation

Air Evacuation Kit

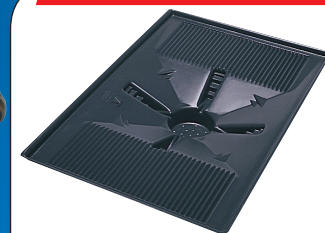
SKU 360667
DOWJDIEK

199⁹⁹

- Converts the DOWJDILP4 Into a Self-Evacuating Drain
- Using Regular Shop Air, Oil Is Easily Transferred From the Drain to the Storage Tank
- Kit Includes Air Regulator and Safety Relief Valve, 10' Evacuation Hose, Drain Plug and Mounting Hardware



Oil Drain Accessories



Super Transmission Drain Funnel

SKU 291377
LIS17902

49⁹⁹

- Extends the Catch Area of Any Lift Drain
- Fits the Ford E 40D



Transmission Drain Funnel

SKU 291376
LIS17892

24⁹⁹

- Extends the Catch Area of Any Lift Drain
- Funnel Size Is 22" x 23"



17 Gallon Poly Low Profile Oil Drain

SKU 360671
DOWJDH17PLP

379⁹⁹

- Gravity or Waste Oil Pump Assisted, 17-Gallon Capacity
- Size: 49"L x 29-1/2"W x 7-3/4"H
- T-Handle Folds Easily for Storage and Has Cleats to Hold Discharge Hose
- Perfect for Heavy-Duty Trucks or Low-Profile Specifications

110 Piece Copper Washer Assortment

SKU 271176
68117

24⁹⁹

- Contains 6 Sizes, 30 Pcs. M6, 25 Pcs. M8, 20 Pcs. M10, 15 Pcs. M12, 10 Pcs. M14, 10 Pcs. M16



NEW

HARDWARE MACHINERY

Packer

Bearing Packer

SKU 900799
25073

24⁹⁹

- Works on Bearings Up to 3-1/2" O.D.
- Forces Old Grease Out and New In



Plug Pro

Drain Plug Pro™

SKU 112476
5911

174⁹⁹

- Hot Oil in the Pan - Not on Your Hand
- Remove Oil Drain Plug without Touching the Plug or Hot Oil
- No Touching Hot Plug, No Hot Oil on Hands, No Dropping of Plug in Hot Oil and No Oil Soaked Gloves
- Magnetically Attach Drain Plug Pro™ to Pre-Loosened Drain Plug and Rotate to Remove Plug



OTC

Absorbents

PIG® Grippy® Absorbent Mat Rolls, Pads and Toolbox Liners

One-of-a-kind absorbent mat that stays put no matter what™. It reduces slip and trip hazards around workstations, walkways and machinery while it helps prevent liquid from being tracked throughout your plant.



Leak & Drip Mat 32" x 50" Roll

SKU 374620
25800

98⁹⁹

Garage Floor Drip Mat 40" x 32"

SKU 374621
25801

17⁹⁹

Workbench Liner 22" x 7'

SKU 374623
25820

18⁹⁹

Toolbox Liner 22" x 10.625"

SKU 374622
25822

17⁹⁹

Toolbox Liner 22" x 16.375"

SKU 374624
25821

19⁹⁹

Universal Light-Weight Absorbent Drum-Top Pad

SKU 186471
25102

- Precut with Holes for 3/4" and 2" Bungs Provide Perfect Fit on Steel 55-Gallon Drum Tops
- 5 Toppers Per Bag



PIG® Universal Medium-Weight Absorbent Mat Roll

SKU 516809
25400

- Faster Cleanup—Handle the Mess and Get back to Work
- Easy to Use—Just Put It Down, Let It Work and Pick It Up



Universal Medium-Weight Absorbent Mat Pack

SKU 289882
25306

- 3 - 15" x 20" Medium Weight Mat Pads per package



Universal Light-Weight Absorbent Mat Roll

SKU 186472
25201

- 15" x 50" Light-Weight Roll

Absorbents

MOP 301 Sorbent 1 Lb Box

SKU 125704
MES1MOP301

13⁹⁹

- Aggressively Absorbs Oil-Based Liquids
- Rejects Water-Based Liquids
- 100% Recycled Materials, 100% Biodegradable
- Effective on Earth, Land, Hard Surfaces and Water
- 1Lb Bag Will Absorb 30 Lbs.



MOP 301 Sorbent 5 Lb Bag

SKU 125701
MESSMOP301

36⁹⁹

- 5Lb Bag Will Absorb 150 Lbs

Gas Caddy

25 Gallon Fuel Chief Steel Gas Caddy

SKU 360585
DOWFC25GC

699⁹⁹

- Makes Fuel Transfer Safe and Easy
- Complies with OSHA guidelines - FM approved
- FM Approved Cast Iron Pump with Carbon Vanes
- Pump - Two-Way Operation for Either Siphoning or Dispensing
- Pump - 1 Gallon for Every 12 Revolutions
- Ground Wire and Clamp
- Fire-Screened Vent and Filler Neck Combination

JD JohnDow Industries



25 Gallon Fuel Chief Poly Gas Caddy with Heavy Duty Pump

SKU 360658
DOWJD125GCP1

729⁹⁹

- 25-Gallon Tank for Fuel Transfer and Storage
- 10" Pneumatic Tires Move Over Almost Any Surface
- Pump - Two-Way Operation for Either Siphoning or Dispensing
- Pump - 1 Gallon for Every 12 Revolutions
- Includes Grounded Suction Hose



Replacement Filter

SKU 360660
DOWGCF

59⁹⁹

- Replacement Filter for DOWFC25GC and DOWJD125GCP1

Funnels

PIG® Form-A-Funnel® Draining Tool



SKU 186473
18609

19⁹⁹

- Works in Temperatures from -30°F to 425°F
- Edges Can Be Molded Around Filters or Drains for a Leak-proof Seal
- Stores Flat or Rolls Up
- Great for Draining Oil and Other Fluids from Any Type of Vehicle or Equipment
- 14.5"L x 6.5"W

22" x 8.625" Pig® Form-A-Funnel® Draining Tool for Heavy Equipment, Trucks, Buses

SKU 289879
18714

39⁹⁹



PIG® 9" x 4.75" Small Form-A-Funnel® Draining Tool

SKU 289883
18509

11⁹⁹



PIG® Magnetic Roll Holder

SKU 19536
57701

22⁹⁹

- Holds one 15"W x 50'L PIG® Mat Roll
- Easily-Relocated Holder Has Powerful Magnets for Mounting on Metal Tool Boxes, Car Lifts, Support Beams and More



Oil and Lube

Fluid Evacuators

Fluid Evacuator
 SKU 594882
 MITMV7400
89⁹⁹

- Integrated 1.9 Gallon (7.3 Liter) Capacity Reservoir
- Large Base with Foot Stabilizer

Fluid Evacuator Plus
 SKU 497200
 MITMV7201
119⁹⁹

- Integrated 2.3 Gallon (8.8 Liter) Capacity Reservoir
- Large Base with Foot Stabilizer

SpeedyVac Fluid with Evacuation Kit
 SKU 361283
 PBT70890
129⁹⁹

- Portable Fluid Evacuation Kit for Automotive, Heavy Duty and Industrial Applications
- Vacuum Hold Feature Allows Use Even When Disconnected from the Air Supply
- Automatic Fluid Shut Off Valve to Prevent Overfilling
- Includes: 5.52' Suction Hose Assembly with On-Off Tap, 5/16" X 11.8' Suction Hose 1/4" X 26" Suction Hose, Brake Bleeder Hose Assembly

Pneumatovac Fluid Evacuator
 SKU 497203
 MITMV7300
129⁹⁹

- Operates on Compressed Air
- 2.3 Gallon (8.8 Liter) Capacity Reservoir
- Large Base with Foot Stabilizer
- Independent Air Shut-Off Valve

Universal Fluid Dispensing System

SKU 265093
 MITMV6400
179⁹⁹

- Dispenses Fluids Under Pressure for Smooth, Continual Flow to Fill or Top-Off Master Cylinders, Coolant Bottles, Automatic Transmissions, Differentials, and Power Steering and Other Reservoirs
- Large 1.2-Gallon (5-Liter) Fluid Capacity
- Internal Pump Components are Sealed Against Exposure to Fluids

Static Clings



Zebra Printer Keyboard Cover
 SKU 291387
 SNGDFBP983384
24⁹⁹

Static Cling Refill Kit
 SKU 291380
 SNGMFKG016501
109⁹⁹

- 2 Rolls of Labels
- 1 Replacement Ribbon

Static Cling Printer Kit

SKU 262530
 SNGDFBP983395
699⁹⁹

- Keyboard with Printer and 1000 Static Cling Labels
- Price Includes Programming of up to 20 Characters of Your Business' Name
- Labels Provided are Generic

Grease Guns

Air Grease Gun
 SKU 125116
 25818
49⁹⁹

- Great for Automotive, Workshop and Marine Use
- Operating Pressure: 30-150 PSI
- Delivery Pressure: 1,200-6,000 PSI
- Air Consumption: 4.0 CFM

Professional Grease Gun
 SKU 522902
 LIN1142
29⁹⁹

- 3 Way Loading: By Cartridge, Bulk Load and Suction Load
- Rugged Cast Pump Head for Strength and Durability
- Jam Proof Toggle Mechanism Prevents Binding or Accidental Bending of Plunger
- Develops 10,000 PSI Pressure
- Uses Common 14-1/2 Oz. Cartridges

Professional Grease Gun with 18" Whip Hose and Coupler
 SKU 522903
 LIN1147
34⁹⁹

- Same as #LIN1142 with 18" Whip Hose and Coupler

Extra Heavy Duty Pistol Grip
 SKU 445385
 LIN1134
49⁹⁹

- 18" Whip Hose
- Includes Rigid Pipe
- Jam Proof Handle
- Variable Stroke Design
- 7,500 PSI
- Filler Nipple/Bleeder Valve

PROMOTION SAVE \$10

Professional Lever Action Grease Gun

SKU 094656
 25893
only \$19⁹⁹ each
 REG. \$29.99

Professional Pistol Grip Grease Gun

SKU 094654
 25892

Adapter Kit

7 Piece Grease Fitting Adapter Kit

SKU 978118
 25711
29⁹⁹

- Includes: Press-on 90° Lube Tool, Straight Extension, 300mm Hose Extension, Slide-on 90° Coupler, Rubber-Tipped Nozzle, Needle Nozzle, 360° Coupler

PowerLuber®

18 Volt PowerLuber® Grease Gun

SKU 988881
 LIN1844
309⁹⁹

- Heavy-Duty High-Torque Motor for Superior Performance
- New 18-Volt High-Capacity Battery Delivers Up to 10 Grease Cartridges
- High-Strength Composite Body and Casting Provide Durability without Weight Penalty
- Next Generation "Smart Charger" for Faster Charge Time
- 2-Speed Transmission Provides High-Volume or High-Pressure Output
- Comes with 2 Batteries

SKU 988878
 LIN1842
259⁹⁹

- Same as 1844 Kit But With 1 Battery

18 Volt Battery

SKU 970540
 LIN1801
79⁹⁹

- Long Life High Capacity 1900 mAh Battery
- Padded Housing with Protected Contacts
- Internally Insulated

Pneumatic PowerLuber®

SKU 445386
 LIN1162
119⁹⁹

- Fully Automatic, Continuous Operation
- Accessible Check Valve Assembly
- 30" High-Pressure Hose with Coupler and Attachment Clip
- Pump Ratio: 40:1 at 150 PSI
- Max. Grease Pressure: 6,000 PSI
- Air Pressure Range: 40-150 PSI

12 Volt PowerLuber® Grease Gun

SKU 219686
 LIN1242
174⁹⁹

SKU 219687
 LIN1244
210⁹⁹

- 6,000 PSI
- High Capacity Ni-Cad 12 Volt Battery
- 30" Flex Hose, Spring Guard and Coupler
- One Hour Smart Charger
- Same as LIN1242 Kit but with 2 Batteries to Reduce Downtime

12 Volt Battery
 SKU 219699
 LIN1201
74⁹⁹

- High Quality Ni-Cad Rechargeable Battery for PowerLuber

Meters, Dispensers and Pumps

Digital Oil Meter
 SKU 383183
 LIN982
319⁹⁹

- Large 6 Digit LCD Display with Two Decimal Point Precision
- Measures in Quarts, Pints, Gallons or Liters 13" Flexible Extension with Automatic Nozzle
- Low Battery Indicator
- Built-In Trigger Guard

Mechanical Oil Meter
 SKU 383184
 LIN877
339⁹⁹

- Large 3-1/2" Dial with 1/4 Quart Graduation
- Measures in Quarts 10 Inch Flexible Extension with Automatic Nozzle

8 Qt. Dispenser Lid & Cap
 SKU 080078
 LIS19702
29⁹⁹

- Now with a Spout Cap and Lid to Keep Out Contaminants. Supersedes 19712
- Our Popular 8 Quart Dispenser With a Spout Cap and Lid to Keep Out Dirt, Dust and Other Contaminants
- Many Large SUVs and Trucks Now Require More Oil

Manual Gear Lube Dispenser
 SKU 174166
 LIN1293
89⁹⁹

- 5' Hose 13" Pump Tube
- Fits 30# Containers
- Delivers 1 Oz. Per Stroke

Fluid Transfer Pump
 SKU 094647
 25713
14⁹⁹

- Small and Lightweight
- Pumps Air into Inflatables
- Includes (2) 50" (127 cm) Long Hoses

5 Quart Flexible Spout Measuring Can
 SKU 298486
 LING525
39⁹⁹

8 Quart Flexible Spout Measuring Can
 SKU 298473
 LING528
39⁹⁹

- Designed for One-Hand Operation
- 14" Flexible Spout with Tapered Tip Swings into the Necessary Angle for Hard-to-Reach Spots
- Recessed Bottom Drains Fully and Guards Against Puncture Rolled-Edge Top Helps Prevent Spilling

Grease Pump Package

SKU 110259
 LIN6917
774⁹⁹

- Portable 50:1, Air Operated, Double-Acting Grease Pump Ensures High-Output Grease Delivery
- Lube Fitting with Control Valve and Universal Swivel
- Standard Follower Wipes 120 Lbs Drum Sides Clean and Keeps the Pump Primed
- Four-Wheel Dolly Maneuvers Easily Around Shop
- Drum Not Included

Heavy Duty Grease Pump for 120 Lbs Drum

SKU 972283
 LIN9917
927⁹⁹

- Pumps Twice the Volume of Standard Pumps
- PMV Hi Pressure 50:1 Pneumatic Pump
- Extra Hi Pressure Control Valve
- Drum Not Included

Heavy Duty Grease Pump for 120 Lbs Drum

SKU 174148
 LIN917
978⁹⁹

- 50:1 Double Acting Pump
- Flexible Follower for Positive Prime
- 7' Hose, Universal Swivel and Control Valve
- 4 Caster Roll-Around Base
- Drum Not Included

Lever Action Barrel Pump

SKU 970530
 LIN1340
69⁹⁹

- Pumps Non Corrosive Fluids, *Not for Gasoline
- Telescoping Tube for 16 to 55 Gallon Drums
- Removable Non-Drip Spout Allows for Threaded Hose Connection

Manual Rotary Pump with Hose for 55 Gallon Drums

SKU 265089
 LIN1385H
209⁹⁹

- Fully Serviceable. Includes: Heavy-Duty 8" X 3/4" Anti-Static Hose with Non-Sparking Aluminum Nozzle with Hanger; Seal-Tight Telescoping Pick-Up Tube with Strainer for 16-55 Gallon Drums With 2" Bung and H.D.
- Drum Not Included

Manual Rotary Fuel Pump with Hose for 55 Gallon Drums

SKU 265088
 LIN1387
259⁹⁹

- Premium 3 Vane Manual Rotary Pump for a Variety Of Industrial Uses and Most All Fluid Types Including, Gasoline, Diesel, Kerosene, Coolant, Non-Corrosive Materials, Medium Viscosity Petroleum Based Fluids, Hydraulic Oils, ATF
- Drum Not Included