

BRAKE SERVICE

Brake Lathe Bench

AMMCO

Brake Lathe Bench Kit

SKU 212739
AMM902500 **699⁹⁹**

- For All AMMCO Lathes
- Includes Sign, Toolboard, Funnel and Bucket
- Convenient Storage with Hooks for All of the Brake Lathe Fixtures and Adapters
- Backwall Storage: Pegboard
- All Steel Construction to Support the Brake Lathe Safely
- Depth: 34.5"
- Height: 30", Not Counting Toolboard
- Width: 48"



Brake Lathes

AMMCO

Model 4000SP Single Pass Brake Lathe

SKU 210247
AMM904000SP **6,199⁹⁹**

- One Pass Precision Finishes
- Cut Rotors in One Pass with a High-Quality Finish
- Positive Rake Tool Bits Allow for Precision Turning That Produces Superior Machined Surfaces
- Twin Cutter Dials and Depth of Cut are Clearly Marked



INCLUDES
Manufacturer's
Set-Up and Training
Purchase of Adapter Kit Required

Bonus Bench Kit & "B" Kit
Part#s AMM902500 & AMM900002
with Purchase of
Model 4000SP Single Pass Brake Lathe
Part# AMM904000SP
For Details Go to
www.rebate.ammcoats.com
Purchase of Adapter Kit Required

Lift Gate Service
SKU 262529 **55⁰⁰**
AMMLIFTGATE

Negative Rake (10 Pack)

SKU 262386
SHA06210 **24⁹⁹**



Model 4000B Brake Lathe

SKU 534380
AMM904000B **7,149⁹⁹**

- Twin Cutter Tools and Quick Drum-to-Rotor Changeover
- Adjustable Spindle Speeds Allow for Quick Rough Cut/Finish Cut Settings
- Infinitely Adjustable Spindle-Feed Gear Box
- User-Friendly Ergonomics
- Supports Drums or Rotors Up to 100 Lbs. Using the 1" Arbor, or Up to 200 Lbs. Using Optional 1-7/8" Arbor



INCLUDES
Manufacturer's
Set-Up and Training
Purchase of Adapter Kit Required

Lift Gate Service
SKU 262529 **55⁰⁰**
AMMLIFTGATE

Negative Rake (10 Pack)

SKU 262386
SHA06210 **24⁹⁹**



Combination Brake Lathe RL8500

Complete Kit Includes Lathe, Adapters and Bench

SKU 901827
RANRL8500 **5,649⁹⁹**

Provides a FASTER More ACCURATE and EASIER Resurfacing Capability Than Any Other Brake Lathe in Its Class

- Infinitely Variable Speed Controller Able to Turn Rotors and Drums Faster Providing One-Cut, Micro-Finish Execution Every Time
- Maximum Rotor Diameter: 17"
- Maximum Rotor Thickness: 2" - 1/2"
- Brake Drum Diameter: 6" - 28"
- Maximum Load w/Standard Arbor: 150 Lbs.
- Maximum Load w/Truck Arbor: 150 Lbs.



(Shown with Optional Equipment. Accessories Not Included.)



Truck Adapter Kit for RL8500 Brake Lathe
SKU 899411
RAN5150161 **1,549⁹⁹**

- Super-Duty Truck Tooling Package Consists of an Upgraded 1-7/8" Arbor and a Wide Variety of Adapters
- 36-Piece Set Allows Expanded Coverage to Handle Any Vehicle Through 1-Ton Trucks

Leasing Terms Available.
Ask Your **AutoZone**® Commercial Sales Manager.
Free Delivery!
In 48 Continental United States

Lift Gate Service
SKU 262533 RANLIFTGATE **135⁰⁰**

Positive Rake Bits (10 Pack)

SKU 300786
SHA408-10 **59⁹⁹**



201 Combination Brake Lathe, Single-Speed

SKU 290004
HOF201TRUECUT **6,799⁹⁹**

- Drive Motor: 1/2 HP (1,725 RPM)
- Arbor Speeds: 185 - 195 (RPM)
- Arbor Diameter (Standard): 1"
- Maximum Arbor Weight (Standard): 150 Lbs
- Rotor/Flywheel/Drum Feed Rate Per Revolution: 0.0025"
- Rotor/Flywheel Diameter Range: 5" - 18"
- Rotor/Flywheel Facing Travel: 4"
- Max Rotor Thickness: 3"
- Drum Diameter Range: 5" - 14"
- Drum Facing Width: 4"
- Power Requirements: 120V, 1Ph, 60HZ
- Includes Standard Adapters for Cars & Light Trucks



(Shown with Optional Equipment. Bench and Board Sold Separately)

Lift Gate Service
SKU 290017 HOFLIFTGATE **95⁰⁰**

Accu-Turn Positive Rake Bits (10 Pack)

SKU 262383
SHA06010 **54⁹⁹**



Work Bench for 201 Brake Lathe

SKU 290008
HOFB206 **499⁹⁹**

Tool Board for 201 Brake Lathe

SKU 290006
HOFB203 **189⁹⁹**

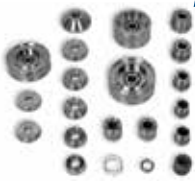
Brake Lathe Adapter Kits

AMMCO

Kit "B"

SKU 496629
AMM900002 **1,149⁹⁹**

- Hub and Hubless Adapters for Vehicles Through 1/2-Ton



Kit "E"

SKU 496630
AMM900006 **1,749⁹⁹**

- Hub and Hubless Adapters for Most Vehicles Through 1-Ton
- Includes Double Chuck Kit and Tacoma Plate for Hubless Applications



Silencer Bands



1-3/4" Drum Silencer Band
SKU 262390
SHA80B **29⁹⁹**



AMMCO Style Large Disc Band with Lead Weights
SKU 262397
SHA930 **39⁹⁹**



2-3/4" Large Truck Drum Silencer Band
SKU 262391
SHAA5290 **49⁹⁹**



Large Solid Rotor Silencer Band (9")
SKU 262396
SHA94 **14⁹⁹**



Large Solid Rotor Silencer Band (6")
SKU 262393
SHA96 **14⁹⁹**



AMMCO Style Disc Silencer Band with Lead Weights
SKU 262392
SHA69 **29⁹⁹**



Silencer Clamp
SKU 388821
SHA70B **39⁹⁹**

Carbide Lathe Inserts

SKU	PART#	DESCRIPTION	APPLICATION	PRICE
262385	SHA0626	Negative Rake (6 Pack) • Models 3860, 4000, 4100 and 7000	Ammco	17⁹⁹
262387	SHA1042	Positive Rake (2 Pack) • Model 3850	Ammco	17⁹⁹
262386	SHA06210	Negative Rake (10 Pack)	Ammco	24⁹⁹
262389	SHA06810	Positive Rake (10 Pack) • Model BL500 and 501	Hunter	29⁹⁹
262388	SHA1046	Carbide Inserts (6 Pack)	Ammco	34⁹⁹
543384	SHA069-10	Positive Rake (10 Pack)	Pro-Cut	49⁹⁹
262382	SHA40710	Carbide Inserts (10 Pack)	FMC	49⁹⁹
262409	SHA80210	Carbide Inserts (10 Pack)	Kwik Way	59⁹⁹
300786	SHA408-10	Positive Rake (10 Pack)	FMC/Ranger	59⁹⁹
262383	SHA06010	Carbide Inserts (10 Pack)	Accuturn	54⁹⁹



SHA1042



SHA1046



SHA80210

Disc Brake Tools

Speedy Pad Spreader

SKU 291417
LIS24300 **42⁹⁹**

- Compresses Disc Brake Pistons in Seconds
- Makes Brake Pad Replacement Easier



Dual Speedy Pad Spreader

SKU 291420
LIS25750 **49⁹⁹**

- Compresses Dual Brake Pistons Simultaneously
- Makes Dual Piston Pad Replacement a Simple Job



Quick Quad Pad Spreader

SKU 080553
LIS29100 **79⁹⁹**

- A Quick Way to Spread Brake Pads and Compress Disc Brake Pistons for Pad Replacement on Single, Double and Quad Piston Calipers
- Simultaneously Compress All Four Pistons on Quad Piston Applications
- Can Be Used While Caliper is on the Vehicle or Hanging Free



OEM



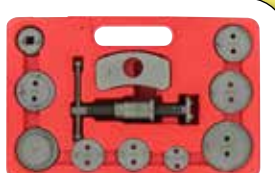
Dual Piston Press

SKU 900811
25741 **29⁹⁹**
Used to Press in Dual Brake and Single Pistons

11-Piece Disc Brake Caliper Set

SKU 695124
33627111 **60⁹⁹** **OEM**

- Assists in the Replacement of Brake Pads on Most 4 Wheel Disc Brake Cars



18-Piece Disc Brake Caliper Set

SKU 094798
27113 **74⁹⁹** **OEM**

- Caliper Adapters from 1-3/16" to 2-1/2", Some Specifically to Service Nissan, SAAB and Honda Models
- Caliper Rotation Tool with Left Hand Threads for Ford Applications





1-877-AZTool1 (phone)
(1-877-298-6651) *Hablamos Español*
aztool@aztool1.com (email)
www.aztool1.com (visit website)

AutoZone®

Tool & Equipment QUARTERLY

Brake Bleeding Tools

One Man Brake Bleeding Kit

SKU 070116
25136 **34⁹⁹**

STORE STOCK

- Easily Diagnose Vacuum and Pressure Related Systems from the EGR to Brake Bleeding to Cooling Systems on Today's Complex Vehicles
- Kit Contains Our Most Popular Hand Vacuum Pump with Vacuum Gauge and Accessories



Clamp On Brake Fluid Refill Kit

SKU 972280
MITMVA6832 **64⁹⁹**

- 40 Oz. (1.2 L) Reservoir Holds Enough Fluid for Entire Flush
- Maintains Correct Level of Fluid While Flushing or Bleeding Brake System
- Conveniently Adapts for Use with Standard 12 Oz. (355 ml) and 32 Oz. (946 ml) Brake Fluid Bottles



Silverline Elite Test Kit

SKU 988888
MITMV8500 **94⁹⁹**

- Provides Either Vacuum or Pressure with Equal Precision and Convenience
- Performs Engine Performance Diagnostics, Brake Bleeding, Fluid Transfer, Evacuation, Sampling and More
- Includes Components Needed to Perform Hundreds of Diagnostic and Mechanical Tests



Brake Bleeding Kit

SKU 604208
MITMV6830 **189⁹⁹**

- Compressed Air Operation
- 1.9 Quart Capacity
- Swivel Air Inlet with Quick Disconnect



BONUS

Refill Kit
SKU 972280 | Part# MITMVA6832
VALUE: \$64.99
with Purchase of:
Brake Bleeding Kit
SKU 604208 | Part# MITMV6830
Offer Good Through September 30, 2015 - While Supplies Last



Offer Good Through September 30, 2015 - While Supplies Last

Vacuum Brake Bleeder

SKU 526506
24440 **59⁹⁹**

- Works with Your Air Compressor to Quickly Bleed Clutches and Brakes on Most Cars and Trucks
- Includes Fill Bottle and Master Cylinder Adapter Set



Universal Fluid Dispensing Bottle

SKU 568477
24443 **39⁹⁹**

- Refill the Master Cylinder During Vacuum or Manual Hydraulic Brake or Clutch Bleeding and Flushing
- Mounts Securely to Master Cylinder and Clamps
- Capacity: 50 Oz.



Vacuum Brake Bleeder

SKU 459166
MITMV6870 **129⁹⁹**

- 1.3 Quart Reservoir
- Applications: Brake Bleeding, Hydraulic Clutch Bleeding
- Includes Two Replacement Bleed Screw Adapters



Hones and Stones

Adjustable Brake Cylinder Hone

SKU 531780
25032 **11⁹⁹**

- Range: 1/2" to 2-1/4" (13 mm to 57 mm)



Brake Cylinder Hone

SKU 047928
25028 **18⁹⁹**

- Range: 3/4" to 2-1/2" (19 mm to 64 mm)

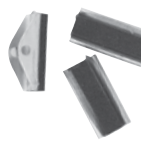


Replacement Stone Sets

SKU 046789
2528M **5⁹⁹**

STORE STOCK

- 2 Medium Grit (#220)



Rotor Flex-Hone

49⁹⁹

- Lowers Harmonic Vibrations
- Ideal for New and Re-Turned Rotors and Flywheels



Fine

SKU 341310
BRMRMFH240Z25

Medium

SKU 341298
BRMRMFH120Z25

Coarse

SKU 341314
BRMRMFH60Z25

Flex-Hone Kit

SKU 341378
BRMBCKD **79⁹⁹**

- For Compact, Medium and Large Cars
- BC Kit D (18 mm, 20 mm 22 mm, 25 mm and 29 mm)



INDIVIDUAL SIZES AVAILABLE

Brake Service Tools

Brake Caliper Brush

SKU 250125
25435 **5⁹⁹**

STORE STOCK

- Slim Design for Cleaning Brake Calipers and Other Brake Hardware



2-Piece Hose Pinchers

SKU 191675
25250 **12⁹⁹**

- A Quick, Easy Way to Pinch Off Vacuum Lines, Fuel Lines, etc. without Damaging the Line



5-Piece Impact Driver Set

SKU 529289
98103 **9⁹⁹**

STORE STOCK

- Impact Driver with 3/8" Drive
- Includes Bit Sizes: #2, #3, 5/16", 3/8"
- Reversible to Firmly Tighten or Loosen Screws or Nuts



Brake Cylinder Retainer Remover

SKU 265111
25268 **16⁹⁹**

- Use on GM X and J Body Cars
- Expands and Holds Special Retainer so the Brake Cylinder May be Removed



8-Piece Manual Brake Gauge Set

SKU 191672
25266 **19⁹⁹**

- Color Coded Brake Gauge Identifies Thickness Levels for Brake Lining Inspection



3/8" Pro Impact Driver

SKU 452628
24213 **24⁹⁹**

- Handle Design Reduces Risk of Hitting Hand
- 3/8" Drive and 5/16" Hex for Phillips and Flat Bits
- Includes Eight Screwdriver Bits



Spring Brake Tool for GM

SKU 222526
LIS50600 **34⁹⁹**

- Releases Tension on Both Large and Small GM Single Spring Brakes During Servicing



8-Piece Brake Tool Set

SKU 900827
27194 **49⁹⁹**

- Includes: Spring Compressor, Brake Spring Installer, Spring Removal Tool, Brake Retaining Spring Tool, Brake Spring Pliers, Two Brake Adjustment Spoons & Mini Adjustment Spoon



Sprayers

Red Powder Coated Aluminum Sprayer

SKU 186463
MSMB8000PL **44⁹⁹**

- 16 Oz. Capacity
- Not for Use with Chlorinated Solvents



Complete Repair Kit for B8000PL

SKU 186467
MSMBK50 **19⁹⁹**

- Includes: (1) Tube of 100 Strips; (100) Color Rating Cards



Red Powder Coated Steel Sprayer

SKU 186459
MSMA1000R **69⁹⁹**

- 32 Oz. Capacity
- Not for Use with Water-Based Products



Filler Cap Assembly

SKU 186466
MSMP156 **19⁹⁹**

- Hand Removable
- For Model "A" Sprayers



Complete Repair Kit for Model "A" Sprayers

SKU 186465
MSMK10 **29⁹⁹**

- Includes: (1) Tube of 100 Strips; (100) Color Rating Cards



Brake Fluid Testers

Brake Fluid Tester

SKU 191687
25267 **29⁹⁹**

- Calibrated for DOT 4 Fluid
- Small Size and Easy to Use Compared to Single Use Strips
- Not for Use with DOT 5 Fluid



BrakeStrip Brake Fluid Copper Test Kit

SKU 289905
PH03006 **79⁹⁹**

- Everything Needed to Test Brake Fluid - Know Within 60 Seconds If It's Time for a Change
- Includes: (1) Tube of 100 Strips; (100) Color Rating Cards



Brake Flush System

Brake Flush System

SKU 548567
RTIBFX2 **3,699⁹⁹**

- The New Standard for Brake Flush Service: Fast, Simple, Automated, Effective and Profitable! A Special Push/Pull Process Flushes the Entire System and Provides the Highest Quality Service. The BFX-2 Does the Job Right.



- Performs OEM Recommended Bleeding Sequences
- Process Eliminates Unwanted Air
- Works on ABS and Non-ABS Brake Systems
- Universal Master Cylinder Adapters with Vehicle Reference Quick Guide

Bleeders

DIY Reverse Brake and Clutch Bleeder

SKU 459112
PH02104-B **59⁹⁹**

- Easily Bleeds ABS
- Removes Trapped Air
- Attachments to Fit all Vehicles



V-12 Economy Professional Reverse Brake and Clutch Bleeder

SKU 289898
PH02003 **189⁹⁹**

- Bleed the Brakes on Any Vehicle in 10 Minutes or Less, Including ABS
- Save Time and Money on Good Parts Not Properly Bled
- One Man Operation



V-12 Petro Pump Used to Bleed Petroleum Hydraulic Systems

SKU 289902
PH02006 **199⁹⁹**

- Complete Kit with Case, Accessories and Adapters for Testing Fuel or Hydraulic Systems to Over 100 Psi and for Bleeding Almost Any Hydraulic Component
- Not for Brake Fluid



MaxProHD Reverse Brake and Clutch Bleeder

SKU 289896
PH02002 **399⁹⁹**



- Bleeds Brakes or Clutches in Half the Time
- Includes a Full Set of Adapters for Vacuum, Pressure, Pulse Generation, Bench and Cross Bleeding Methods