

# ENGINE SERVICE TOOLS

**STOP the Knock!**

**Ford Cam Phaser Noise Repair Kit 4.6/5.4 3V**  
SKU 079897 24206 **699<sup>99</sup>**

- Adding this Kit to a 4.6/5.4L 3V Car, Truck, or SUV Will Help Ensure that Your Cam Phasers Don't Suffer Premature Failure
- Included Timing Chain Wedge Tool Increases Ease of Installation
- Included Simple to Use Vehicle Computer Programmer with OBD-II Cable to Disable Cam Phaser Function
- One Kit Corrects Both Cam Phasers
- Cam Phaser Is NOT INCLUDED

**This Kit is a True, Long Term Repair for Ford Cam Phaser Noise**



**OEM TOOLS**

**Ford Timing Chain Locking Wedge Tool (4.6/5.4 3V Engines)**

SKU 012647 24207 **19<sup>99</sup>**

**NEW**

- For 2005-14 5.4L and 4.6L 3V
- OE Type Tool
- Allows For Easy Cam Changes Without Removing The Timing Cover



**Stop Saying No to Business and Be Confident Your Customers Will Be Satisfied!**

**SAVE \$10**

**Timing Gear Holder**

SKU 544797 24387 **39<sup>99</sup>** REG. \$49.99

- Holds the Timing Gear in Place During Removal and Installation and Prevents It from Moving While the Retaining Bolt Is Removed
- Allows the Cam Gear to Rotate to Align Valve Timing Marks
- Single Lever Locking Design Is Easy-to-Use

Offer Good Through September 30, 2016 - While Supplies Last



**Valve Tools**

**Valve Spring Compressor**

SKU 231210 25220 **19<sup>99</sup>**

**STORE STOCK**

- Designed for Use On Most Trucks and Cars with Overhead Valves



**Push Rod Remover**

SKU 459100 LIS48300 **24<sup>99</sup>**

- Re-Designed for Newer 3.5L and 3.6L GM Engines - Also Works On GM V6 2.8L, 3.1L and 3.4L
- Quickly Removes Push Rods to Replace the Intake Gaskets without Removing Rocker Arms



**Valve Keeper Remover and Installer Kit**

SKU 011658 LIS36050 **69<sup>99</sup>**

- For Use with Valve Stems from 4.5 to 7.5mm and 5/16" to 3/8"
- Magnet in Tool Body Captures Keepers
- Works on Toyota 4 Cylinder and Chrysler New World Engine Applications



**Ford Valve Spring Compressor**

SKU 626111 24434 **69<sup>99</sup>**

- Applications: 1991-2004 Ford Vehicles with 4.6L, 2V, V8 Engines; 4.6 4V, 5.4 V8 and 6.8 V10
- Works with Engine Removed or Installed, Cylinder Head On or Off
- Not for Triton 5.4 3V



**Parallel Lift Spring Compressor**

SKU 516515 27075 **71<sup>99</sup>**

- Strong but Light Frame - Weighs Only 6 Lbs.
- Works with Most Valve-in Head and L-Head Engines As Well As Truck and Tractor Engines
- Capacity 1" - 2" Springs
- Throat Depth 10"
- Includes Straight and Offset Jaws



**Piston Tools**

**Piston Ring Compressor (2-1/8" - 5")**

SKU 531921 25037 **13<sup>99</sup>**

**STORE STOCK**

- Constructed of High Grade Spring Steel with 1/4" Square Drive Adjuster
- Beaded Edge Prevents Tool from Entering Cylinder with Pistons



**Piston Ring Compressor (3-1/2" - 7")**

SKU 531947 25039 **16<sup>99</sup>**

**STORE STOCK**

- Constructed of High Grade Spring Steel with 1/4" Square Drive Adjuster
- Beaded Edge Prevents Tool from Entering Cylinder with Pistons



**Piston Ring Compressor Set**

SKU 526501 WLMW89410 **34<sup>99</sup>**

- You Get Six Band Sizes for Multiple Applications and the Pliers Can Be Used Parallel or Perpendicular to the Cylinder Block
- Set Comes in a Blow Mold Case
  - 2-7/8" - 3-1/8" (73 - 79 mm)
  - 3-1/8" - 3-3/8" (79 - 86 mm)
  - 3-3/8" - 3-5/8" (86 - 92 mm)
  - 3-5/8" - 3-7/8" (92 - 98 mm)
  - 3-7/8" - 4-1/8" (98 - 105 mm)



While Supplies Last

**Wrinkle Band Compressor**

SKU 246373 25257 **22<sup>99</sup>**

- 1-1/2" Deep Low Friction Wrinkle Band
- Fits 3" to 5" Pistons



**Ridge Reamer**

SKU 532325 25051 **31<sup>99</sup>**

- Capacity 3" to 5" (76 mm to 127 mm)
- For Use On Conventional and Slant-Block Engines



**SAVE \$20**

**Camshaft and Crankshaft Seal Tool Kit**

SKU 544799 24386 **79<sup>99</sup>** REG. \$99.99

- Easily Remove and Install Camshaft and Crankshaft Seals
- Compact Puller with Unique Extracting Hooks Engage Seal for Quick Removal
- Interchangeable Sleeves and Mandrels Allow Easy Installation of New Seal
- Suits Seals from 21.5 mm - 64 mm
- Sleeves and Mandrels Made from High Strength Fiber Glass Reinforced Polymer



Offer Good Through September 30, 2016 - While Supplies Last

Scan for Instructions on How to Use This Universal Seal Tool Kit

**Cam/Crankshaft Tools**

**Ford 2.0L, 2.3L, 2.5L Cam Tool Kit**

SKU 626108 24448 **24<sup>99</sup>**

- Applications: 2.0L DOHC Engines Found in 1994-2003 Ford and Mercury, 2004-2012 2.5L DOHC, 2.3L DOHC 4V and 2.0L DOHC Engines in Ford, Mercury and Mazda, and 2.0L DOHC Engines in 1993-1994 Ford Probe



**5 Piece Master Cam Clamp Kit**

SKU 383452 27210 **79<sup>99</sup>**

- Covers Most Single, Twin Cam and Quad Cam Engines
- Locks Camshaft to Hold Valve Timing During Timing Belt Replacement



**17 mm Crank Bolt Socket**

SKU 818785 CAL981 **29<sup>99</sup>**

**19 mm Crank Bolt Socket**

SKU 818784 CAL982 **29<sup>99</sup>**

**21 mm Crank Bolt Socket**

SKU 818782 CAL983 **29<sup>99</sup>**

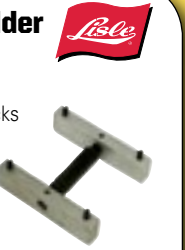
- Remove Stubborn Crankshaft Pulley Bolts - No Special Tool Required
- Increase Working Torque Up to 50%
- Works with Any Standard 1/2" Impact



**DOHC Cam Lock Holder**

SKU 291419 LIS36880 **39<sup>99</sup>**

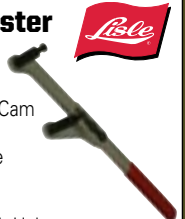
- This Versatile Tool Easily Locks and Holds Both Camshaft Sprockets Firmly in Place
- Preserves the Engine Timing During Belt or Chain Replacement



**Universal Cam Adjuster**

SKU 222524 LIS38220 **41<sup>99</sup>**

- Adjusts to Fit Different Size Cam Sprockets
- Holds Cam Sprocket in Place When Removing Cam Bolt
- Works On All Single and Dual Overhead Cam Sprockets with Holes



**Universal Camshaft Bearing Tool**

SKU 191677 27143 **229<sup>99</sup>**

- Removes or Inserts Camshaft Bearings in Nearly All Engines
- Easy On Bearings
- Range: 1.125" to 2.69"
- Set Includes: Driving Shaft, Driving Shaft Extension, Expander Unit, (5) Split Driving Plugs, (2) Driving Collars and Center in Cone



**Honda Crankshaft Pulley Holding Tool**

SKU 217379 27176 **39<sup>99</sup>**

- Holds Crankshaft Dampeners When Tightening/Loosening Crankshaft Bolts On Honda and Acura Engines 1990 to Present



**DID YOU KNOW?**

Autozone has availability to over 14,000 unique part numbers for replacement engines and transmissions.

Contact Your AutoZone Commercial Sales Manager for Details



Contact Us:  
**1-877-AZTool1** Phone  
 (1-877-298-6651) *Hablamos Español*

### Throttle Depressors

#### Brake - Accelerator Pedal Depressor

SKU 802194  
24232  
**29<sup>99</sup>**  
 • Easy to Adjust  
 • Extends to 24"  
 • Suitable for Many Diagnostic Applications



#### Throttle Pedal Depressor

SKU 222525  
LIS48700  
**31<sup>99</sup>**  
 • Holds Throttle at a Constant RPM  
 • Length: 40"

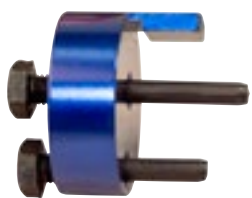


### Belt Tools

#### Stretch Belt Installation Tool

SKU 227301  
24363  
**21<sup>99</sup>**

- STORE STOCK**
- Works On Both Large and Small Pulleys
  - Clamping Jaw Allows User to Position Serpentine Belt without the Belt Slipping Out of the Tool



#### Stretch Belt Mate Kit

SKU 544729  
24388  
**12<sup>99</sup>**

- Easily Installs All Stretch Fit Belts

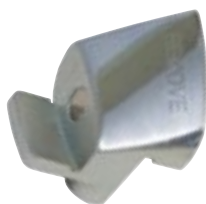


Scan for Instructions on How to Use Stretch Belt Mate Kit

#### Stretch Belt Remover and Installer

SKU 255866  
LIS59370  
**22<sup>99</sup>**

- Unique Magnetic Faces Hold the Tool in Place On the Pulley
- Compact, One-Piece Tool Can Be Used On the Front or Back Side of the Pulley



#### Serpentine Belt Tool

SKU 695121  
33627115  
**30<sup>99</sup>**

- Provides Required Leverage and Clearance to Release Spring Pressure and Remove Tensioner Pulley



### Block Testers

#### Block Tester

SKU 695104  
33627145  
**25<sup>99</sup>**

- Locate Internal Combustion Leaks Quickly and Easily
- When Fluid Turns from Blue to Yellow a Combustion Leak Is Present



#### Block Tester Test Fluid (8 Oz.)

SKU 391381  
25739  
**8<sup>99</sup>**

- STORE STOCK**
- Use with Block Tester #33627145



### Engine Cylinder Hones

#### Adjustable Engine Cylinder Hone Deglazer

SKU 532002  
25041  
**31<sup>99</sup>**

- STORE STOCK**
- Range: 2" to 7" (51 mm to 128 mm)
  - Spring Tension Adjusting Nut for Positive Cutting Action at All Speeds
  - Supplied with 4" Medium Grit Stones



#### Replacement Stone Sets

SKU 141540 2541C <b>11<sup>99</sup></b> <b>STORE STOCK</b> • 3 Coarse Grit (#100)	SKU 532036 2541M <b>11<sup>99</sup></b> <b>STORE STOCK</b> • 3 Medium Grit (#220)	SKU 532044 2541F <b>9<sup>99</sup></b> <b>STORE STOCK</b> • 3 Fine Grit (#400)
---	---	--



### FLEX-HONE®

#### Flex-Hone BC

10 mm (.394") SKU 341249 BRMBC10M18 <b>24<sup>99</sup></b>	6.4 mm (.250") SKU 343384 BRMBC64M24 <b>24<sup>99</sup></b>
---	--

### FLEX-HONE®

#### Flex-Hone GB

3-1/2" (89 mm) SKU 341239 BRMGB31212 <b>47<sup>99</sup></b>	3-1/4" (83 mm) SKU 341232 BRMGB31412 <b>47<sup>99</sup></b>	3-3/4" (95 mm) SKU 341317 BRMGB33412 <b>53<sup>99</sup></b>	4-1/8" (105 mm) SKU 341325 BRMGB41812 <b>57<sup>99</sup></b>	4-5/8" (118 mm) SKU 341332 BRMGB45812 <b>63<sup>99</sup></b>
--	--	--	---	---

CALL FOR ADDITIONAL SIZES



## SAVE \$70

#### Crankshaft and Camshaft Seal Kit

SKU 512952  
27222  
**79<sup>99</sup>** REG. \$149.99

- Install and Remove Oil Seals Between 27mm and 58mm in Diameter

**NEW**



Offer Good Through September 30, 2016  
While Supplies Last

## DID YOU KNOW?

We carry pump and timing component kits.

Contact Your AutoZone Commercial Sales Manager for Details

### Fan Clutch Tools

#### Universal Pulley and Fan Clutch Holder

SKU 547013  
27281  
**69<sup>99</sup>**

- Fits Many Different Fan Clutches, Cam and Crank Pulleys with Slots or Holes
- Pin Sizes: 6 - 10 mm, 8 - 11 mm, 10 - 12 mm, 11 - 16 mm
- Adjustable Diameter: 1-1/2" - 8-5/8"



#### Fan Clutch Service Set for Mercedes-Benz and BMW

SKU 512958  
27224  
**199<sup>99</sup>**

- Removes Lock Nuts On Thermo Viscous Fans Found On Mercedes-Benz, BMW and Many Ford Models
- Includes: (1) Mercedes-Benz Fan Clutch Wrenches - 36mm, 40mm and 65 mm Opening (1) BMW Fan Clutch Wrench - 32 mm Opening (1) BMW Fan Clutch Holding Wrench - 38 mm and 44.5 mm and 1 Mercedes-Benz Fan Clutch Holding Tool



#### Universal Fan Wrench Set

SKU 080554  
LIS43600  
**73<sup>99</sup>**

- Use On the Most Popular Applications
- Unique Hooked Wrench Design Will Hold Bolted On Water Pump Pulleys By Applying Pressure Against Another Bolt
- Double-Sided Spanner Style Holding Wrench Will Hold Pressed On Pulleys On Many GM, Jeep and Dodge Vehicles



#### Fan Clutch Wrench Set

SKU 110280  
27186  
**79<sup>99</sup>**

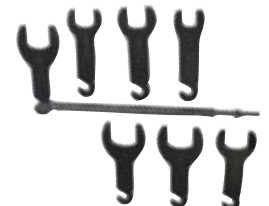
- OEM Master Fan Clutch Wrench Set Combines OEM #27108 and OEM #27141 into a Master Set
- Ideal for Removing Fan Clutches from Water Pumps
- Set Includes: 36, 40, 48, 54, 57, 68, 72, 76 and 83 mm Wrench Sizes



#### Pneumatic Fan Clutch Wrench Set

SKU 291409  
LIS43300  
**182<sup>99</sup>**

- Quickly Removes and Installs Fan Clutch When Repairing the Water Pump or Fan Clutch
- Set Includes: 36, 41 and 42 mm; 1.5", 1-9/16", 1-7/8" and 2" Wrench Sizes



### Clutch Tools

#### Duramax Flywheel Lock

SKU 301613  
LIS22100  
**49<sup>99</sup>**

- Locks Flywheel in Place When Removing Harmonic Balancer On 6.6L Duramax with Allison Transmissions
- Saves Time By Locking the Flywheel at the Transmission Instead of Having to Remove the Starter for Water Pump Replacement



#### Flywheel Turner

SKU 505066  
LIS23800  
**34<sup>99</sup>**

- For Turning and Holding Flexplates and Flywheels
- Easily Turn Engine from Underneath the Vehicle



### Freeze Plug Tool

#### Master Freeze Plug Installation Tool Kit

SKU 965837  
27208  
**99<sup>99</sup>**

- Designed to Remove and Install Freeze Plugs Used in Liquid-Cooled Gas and Diesel Engines

