

JACKS AND HYDRAULICS

Floor Jacks and Stands

2 Ton Floor Jack

SKU 964622
HEIHW93642

409⁹⁹

- Min. Height: 4-1/2"
- Max. Height: 20-1/4"



3 Ton Floor Jack

SKU 964623
HEIHW93652

534⁹⁹

- Min. Height: 5"
- Max. Height: 23-1/2"



3 Ton Ratcheting Jack Stand Set

SKU 964601
HEIHW93503

94⁹⁹

- Max. Height: 19"
- Ratchet Action Height Adjustment



6 Ton Ratcheting Jack Stand Set

SKU 964621
HEIHW93506

134⁹⁹

- Max. Height: 25-3/8"
- Ratchet Action Height Adjustment



4 Ton Floor Jack

SKU 964624
HEIHW93657

1,629⁹⁹

- Min. Height: 5"
- Max. Height: 25-3/4"



22 Ton Air Hydraulic Truck Jack

SKU 544796
24851

399⁹⁹

- Compact, Low Profile Design Easily and Safely Fits Between Wheels of Tandem Axle Vehicles
- Min. Height: 8-7/8"
- Max. Height: 17-3/4"
- Ram Travel: 4-3/4"
- Screw Adjustment: 4-1/8"



The Banner 3-1/2 Ton Fast Lift Service Jack

SKU 344792
BHKB6350

199⁹⁹

- Min. Height: 5-1/2"
- Max. Height: 22"



3 Ton Jack Stand Set

SKU 222493
BHKBH5030

44⁹⁹

- Max. Height: 17"



3 Ton "Magic Lift" Jack With 3 Ton Stands

SKU 544584
OMG25033

189⁹⁹

- Jack Maximum Height: 20-7/8"
- Jack Minimum Height: 5-1/4"
- Jack Stands Maximum Height: 17"
- Jack Stands Minimum Height: 11-1/2"



3-1/2 Ton "Magic Lift" Service Jack

SKU 964644
OMG27035

249⁹⁹

- Innovative Design of Magic Lift Offers a Quick Lift
- Max. Height: 23"
- Low Profile Design Allows for Easy Access to Lift Points



6 Ton Magic Lift Jack Stand Set

SKU 964648
OMG32066

79⁹⁹

- Max. Height: 24-1/4"



20 Ton Air Hydraulic Bottle Jack

SKU 544795
24850

129⁹⁹

- Can Be Operated With Air or Manually
- Height: 10.25" - 20"
- Extension Screw Adjusts 3.25"



1,500 Lbs. High Reach Jack Stand

SKU 300796
BHKBH5710

119⁹⁹

- Min. Lift Height: 53-3/8"
- Max. Lift Height: 78-7/8"
- Base: 12" Diameter

3/4 Ton High Reach Jack Stand With Foot Pedal

SKU 300797
BHKBH5715

124⁹⁹



22 Ton Truck Stand - Pin Style

SKU 964651
OMG32225

199⁹⁹

- Min. Height: 9-1/2"
- Max. Height: 19-7/8"
- Sturdy, Welded Steel Construction for Superior Safety and Strength
- Sold in Pairs and Used in Pairs



2 Ton Low Profile Jack

SKU 964645
OMG29023

274⁹⁹

- For Low Profile Cars as Well as SUVs
- Extra Long Low Side Rails to Reach Hard to Get to Jack Points
- Low Height: Only 2.5"
- Max. Height: 20"



20 Ton Air Actuated Bottle Jack

SKU 012650
OMG18204C

294⁹⁹

- Minimum Height: 9-3/4"
- Max Height: 18-3/4"
- Hydraulic Lifting: 5-1/8"
- Extension Screw: 3-7/8"



QuickJack™

5,000 Lbs. QuickJack™ Car Jack Support System

SKU 850896
RANBL5000SLXA (110V AC)

1,349⁹⁹

- Complete Package Includes: (2) Ea. Jack Frame Assemblies, (2) Ea. 150" Hydraulic Hoses, (2) Ea. 14" Aux. Hoses, (2) Ea. Quick-Mount Handles, (4) Ea. 1.5" X 3" X 4" Rubber Lifting Blocks, (4) Ea. 3" X 3" X 4" Rubber Lifting Blocks, (1) Mini Hydraulic Power Unit With Pendant Control.



Price Does Not Include Vehicles, Installation or Optional Equipment as Shown.

12V DC Option Available

3,500 Lbs. QuickJack™

SKU 850894
RANBL3500SLXA (110V AC)

1,129⁹⁹

7,000 Lbs. QuickJack™

SKU 850897
RANBL7000SLXA (110V AC)

1,599⁹⁹

- Also Included: (1) SUV and Light Truck Adapter Set

That Includes: (4) Low-profile Round Polyurethane Contact Pads, (4) 3" Stackable Adapters, (4) Sliding Receivers



QuickJack™ SUV and Light Truck Adapters

SKU 862288
RAN5150561

299⁹⁹

- Set of 12 Pieces
- Fits BL-5000 and BL-7000 Series
- Complete Kit Includes: (4) Low-Profile Round Polyurethane Contact Pads (4) Sliding Receivers Accommodate the Round Polyurethane Contact Pads (4) 3" Stackable Adapters



You get it all.



(2) Ea. 150" Hydraulic Hoses

(2) Ea. 14" Aux. Hoses

(2) Ea. Jack Frame Assemblies

(2) Ea. Quick-Mount Handles

(4) Ea. 1.5" x 3" x 4" Rubber Blocks

(4) Ea. 3" x 3" x 4" Rubber Blocks

(1) Ea. Mini Hydraulic Power Unit, 110V AC Standard. Includes Pendant Control. (Optional 12V-DC Available)

(2) Ea. 150" Hydraulic Hoses

(2) Ea. 14" Aux. Hoses

(2) Ea. Jack Frame Assemblies

(2) Ea. Quick-Mount Handles

(4) Ea. 1.5" x 3" x 4" Rubber Blocks

(4) Ea. 3" x 3" x 4" Rubber Blocks

(1) Ea. Mini Hydraulic Power Unit, 110V AC Standard. Includes Pendant Control. (Optional 12V-DC Available)

(2) Ea. 150" Hydraulic Hoses

(2) Ea. 14" Aux. Hoses

(2) Ea. Jack Frame Assemblies

(2) Ea. Quick-Mount Handles

(4) Ea. 1.5" x 3" x 4" Rubber Blocks

(4) Ea. 3" x 3" x 4" Rubber Blocks

(1) Ea. Mini Hydraulic Power Unit, 110V AC Standard. Includes Pendant Control. (Optional 12V-DC Available)

(2) Ea. 150" Hydraulic Hoses

(2) Ea. 14" Aux. Hoses

(2) Ea. Jack Frame Assemblies

(2) Ea. Quick-Mount Handles

(4) Ea. 1.5" x 3" x 4" Rubber Blocks

(4) Ea. 3" x 3" x 4" Rubber Blocks

(1) Ea. Mini Hydraulic Power Unit, 110V AC Standard. Includes Pendant Control. (Optional 12V-DC Available)

(2) Ea. 150" Hydraulic Hoses

(2) Ea. 14" Aux. Hoses

(2) Ea. Jack Frame Assemblies

(2) Ea. Quick-Mount Handles

(4) Ea. 1.5" x 3" x 4" Rubber Blocks

(4) Ea. 3" x 3" x 4" Rubber Blocks

(1) Ea. Mini Hydraulic Power Unit, 110V AC Standard. Includes Pendant Control. (Optional 12V-DC Available)

(2) Ea. 150" Hydraulic Hoses

(2) Ea. 14" Aux. Hoses

(2) Ea. Jack Frame Assemblies

(2) Ea. Quick-Mount Handles

(4) Ea. 1.5" x 3" x 4" Rubber Blocks

(4) Ea. 3" x 3" x 4" Rubber Blocks

(1) Ea. Mini Hydraulic Power Unit, 110V AC Standard. Includes Pendant Control. (Optional 12V-DC Available)

(2) Ea. 150" Hydraulic Hoses

(2) Ea. 14" Aux. Hoses

(2) Ea. Jack Frame Assemblies

(2) Ea. Quick-Mount Handles

(4) Ea. 1.5" x 3" x 4" Rubber Blocks

(4) Ea. 3" x 3" x 4" Rubber Blocks

(1) Ea. Mini Hydraulic Power Unit, 110V AC Standard. Includes Pendant Control. (Optional 12V-DC Available)

(2) Ea. 150" Hydraulic Hoses

(2) Ea. 14" Aux. Hoses

(2) Ea. Jack Frame Assemblies

(2) Ea. Quick-Mount Handles

(4) Ea. 1.5" x 3" x 4" Rubber Blocks

(4) Ea. 3" x 3" x 4" Rubber Blocks

(1) Ea. Mini Hydraulic Power Unit, 110V AC Standard. Includes Pendant Control. (Optional 12V-DC Available)

(2) Ea. 150" Hydraulic Hoses

(2) Ea. 14" Aux. Hoses

(2) Ea. Jack Frame Assemblies

(2) Ea. Quick-Mount Handles

(4) Ea. 1.5" x 3" x 4" Rubber Blocks

(4) Ea. 3" x 3" x 4" Rubber Blocks

(1) Ea. Mini Hydraulic Power Unit, 110V AC Standard. Includes Pendant Control. (Optional 12V-DC Available)

(2) Ea. 150" Hydraulic Hoses

(2) Ea. 14" Aux. Hoses

(2) Ea. Jack Frame Assemblies

(2) Ea. Quick-Mount Handles

(4) Ea. 1.5" x 3" x 4" Rubber Blocks

(4) Ea. 3" x 3" x 4" Rubber Blocks

(1) Ea. Mini Hydraulic Power Unit, 110V AC Standard. Includes Pendant Control. (Optional 12V-DC Available)

(2) Ea. 150" Hydraulic Hoses

(2) Ea. 14" Aux. Hoses

(2) Ea. Jack Frame Assemblies

(2) Ea. Quick-Mount Handles

(4) Ea. 1.5" x 3" x 4" Rubber Blocks

(4) Ea. 3" x 3" x 4" Rubber Blocks

(1) Ea. Mini Hydraulic Power Unit, 110V AC Standard. Includes Pendant Control. (Optional 12V-DC Available)

(2) Ea. 150" Hydraulic Hoses

(2) Ea. 14" Aux. Hoses

(2) Ea. Jack Frame Assemblies

(2) Ea. Quick-Mount Handles

(4) Ea. 1.5" x 3" x 4" Rubber Blocks

(4) Ea. 3" x 3" x 4" Rubber Blocks

(1) Ea. Mini Hydraulic Power Unit, 110V AC Standard. Includes Pendant Control. (Optional 12V-DC Available)

(2) Ea. 150" Hydraulic Hoses

(2) Ea. 14" Aux. Hoses

(2) Ea. Jack Frame Assemblies

(2) Ea. Quick-Mount Handles

(4) Ea. 1.5" x 3" x 4" Rubber Blocks

(4) Ea. 3" x 3" x 4" Rubber Blocks

(1) Ea. Mini Hydraulic Power Unit, 110V AC Standard. Includes Pendant Control. (Optional 12V-DC Available)

(2) Ea. 150" Hydraulic Hoses

(2) Ea. 14" Aux. Hoses

(2) Ea. Jack Frame Assemblies

(2) Ea. Quick-Mount Handles

(4) Ea. 1.5" x 3" x 4" Rubber Blocks

(4) Ea. 3" x 3" x 4" Rubber Blocks

(1) Ea. Mini Hydraulic Power Unit, 110V AC Standard. Includes Pendant Control. (Optional 12V-DC Available)

(2) Ea. 150" Hydraulic Hoses

(2) Ea. 14" Aux. Hoses

(2) Ea. Jack Frame Assemblies

(2) Ea. Quick-Mount Handles

(4) Ea. 1.5" x 3" x 4" Rubber Blocks

(4) Ea. 3" x 3" x 4" Rubber Blocks

(1) Ea. Mini Hydraulic Power Unit, 110V AC Standard. Includes Pendant Control. (Optional 12V-DC Available)

(2) Ea. 150" Hydraulic Hoses

(2) Ea. 14" Aux. Hoses

(2) Ea. Jack Frame Assemblies

(2) Ea. Quick-Mount Handles

(4) Ea. 1.5" x 3" x 4" Rubber Blocks

(4) Ea. 3" x 3" x 4" Rubber Blocks

(1) Ea. Mini Hydraulic Power Unit, 110V AC Standard. Includes Pendant Control. (Optional 12V-DC Available)

(2) Ea. 150" Hydraulic Hoses

(2) Ea. 14" Aux. Hoses

(2) Ea. Jack Frame Assemblies

(2) Ea. Quick-Mount Handles

(4) Ea. 1.5" x 3" x 4" Rubber Blocks

(4) Ea. 3" x 3" x 4" Rubber Blocks

(1) Ea. Mini Hydraulic Power Unit, 110V AC Standard. Includes Pendant Control. (Optional 12V-DC Available)

(2) Ea. 150" Hydraulic Hoses

(2) Ea. 14" Aux. Hoses

(2) Ea. Jack Frame Assemblies

(2) Ea. Quick-Mount Handles

(4) Ea. 1.5" x 3" x 4" Rubber Blocks

(4) Ea. 3" x 3" x 4" Rubber Blocks

(1) Ea. Mini Hydraulic Power Unit, 110V AC Standard. Includes Pendant Control. (Optional 12V-DC Available)

(2) Ea. 150" Hydraulic Hoses

(2) Ea. 14" Aux. Hoses

(2) Ea. Jack Frame Assemblies

(2) Ea. Quick-Mount Handles

(4) Ea. 1.5" x 3" x 4" Rubber Blocks

(4) Ea. 3" x 3" x 4" Rubber Blocks

(1) Ea. Mini Hydraulic Power Unit, 110V AC Standard. Includes Pendant Control. (Optional 12V-DC Available)

(2) Ea. 150" Hydraulic Hoses

(2) Ea. 14" Aux. Hoses

(2) Ea. Jack Frame Assemblies

(2) Ea. Quick-Mount Handles

(4) Ea. 1.5" x 3" x 4" Rubber Blocks

(4) Ea. 3" x 3" x 4" Rubber Blocks

Transmission Jacks

1,100 Lbs.
Telescopic
Transmission Jack

- SKU 544786 24840 **179⁹⁹**
- Lift Range: 51" - 70"
 - Adjustable Saddle With Tilt in Both Directions
 - Durable Steel Casters
 - Safety Tie-Down Chain to Secure the Load



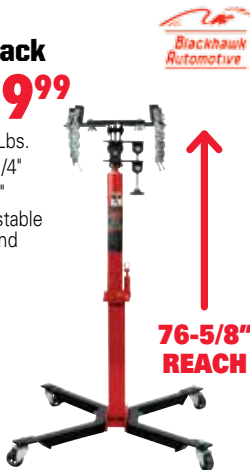
1/2 Ton Capacity
Transmission
Jack

- SKU 902481 RANRTJ1100 **379⁹⁹**
- Lifting Capacity: 1,100 Lbs.
 - Lowered Height: 45"
 - Raised Height: 72"



700 Lbs.
Transmission Jack

- SKU 533215 BHKBH7000 **389⁹⁹**
- Lifting Capacity: 700 Lbs.
 - Lowered Height: 57-1/4"
 - Raised Height: 76-5/8"
 - Double Pivoting Adjustable Saddle that Can Expand to Almost 19" x 19"



1 Ton, 2 Stage
Transmission Jack

- SKU 544788 24842 **599⁹⁹**
- Lift Range: 33.5" - 72.5"
 - 3 Way Adjustable Saddle Slides and Tilts Both Directions
 - Convenient Foot Pedal Pump and Release
 - Safety Anchor
 - Chain Included



1 Ton Telescoping
"Transjak"

- SKU 902478 RANRTJ1 **689⁹⁹**
- Capacity First Stage: 2,000 Lbs.
 - Capacity Second Stage: 1,000 Lbs.
 - Lowered Height: 37"
 - Raised Height: 79-1/2"



1/2 Ton Telescoping
Transmission Jack

- SKU 964652 OMG41000C **744⁹⁹**
- Lifting Capacity: 1,000 Lbs.
 - Lowered Height: 37-7/8"
 - Raised Height: 77-5/8"



1-1/2 Ton
Telescoping
Transmission Jack

- SKU 902484 RANRTJ3000 **749⁹⁹**
- Capacity First Stage: 3,000 Lbs.
 - Capacity Second Stage: 2,000 Lbs.
 - Lowered Height: 37"
 - Raised Height: 79-1/2"



1/2 Ton Air Actuated
Telescopic
Transmission Jack

- SKU 222744 OMG41001C **1079⁹⁹**
- Air Turbo Motor is Air Equipped to Raise the Load to the Desired Height Efficiently, Effortlessly and Safely
 - Chrome-Plated Rams Maximize its High Reach Operated By a User-Friendly Foot Pedal
 - Max. Height: 78-1/8"



1 Ton Floor Style
Transmission Jack

- SKU 964631 HEIHW93718 **2,284⁹⁹**
- Max. Height: 44-3/4"
 - Designed for Heavy Duty Transmissions



Fuel Tank Adapter for Transmission Jacks

- SKU 222503 DOWJDI-FTA7 **189⁹⁹**
- Safe and Convenient Adapter for Handling Vehicle Fuel Tanks
 - Works With Most Transmission Jacks



SAVE \$50

1,100 Lbs. High Lift
Transmission Jack
With Foot Pump

- SKU 750006 24844 **299⁹⁹** REG. \$349.99
- Lift Range: 47" - 77"
 - Adjustable Saddle With Tilt
 - Spring-Loaded Release Valve Controls Lowering
 - Durable Steel Casters



Offer Good Through
December 31, 2016
While Supplies Last

SAVE \$50

800 Lbs. Low Profile
Transmission Jack

- SKU 544789 24843 **299⁹⁹** REG. \$349.99
- Lift Range: 8-1/4" to 30-1/2"
 - Fully Adjustable Saddle Adapts to Most Transmission Pans
 - Swivel Saddle Adjusts Both Directions
 - (4) Swivel Ball Bearing Casters for Ease of Mobility



Offer Good Through
December 31, 2016
While Supplies Last

SAVE \$50

ManSpace 2 Stage
Transmission Jack

- SKU 186451 DAN105452 **480⁹⁹** REG. \$530.99
- First Stage: 1,000 Lbs., Second Stage: 500 Lbs.
 - Min: 34" - Max: 71"
 - Safety Overload System
 - Heavy-Duty Steel Swivel Casters
 - Hands-Free Foot Pedal



Offer Good Through December 31
While Supplies Last

Accessories

5 Ton Flat
Body Kit

- SKU 964667 PPBB65139 **154⁹⁹**
- Ideal for Applications in Limited Spaces
 - (4) Adapters for Added Height
 - Chrome Plated Plunger



Body Repair

4 Ton Body
Repair Kit

- SKU 964654 OMG50040 **174⁹⁹**
- Quick Connect Technology for Effortless Assembly



10 Ton Body Repair Kit

- SKU 964656 OMG50100 **274⁹⁹**
- Quick Connect Technology for Effortless Assembly of Attachments to Meet Your Pushing and Pulling Needs
 - Includes: Hand Pump, Hydraulic Hose, 10 Ton Ram, 18", 10", 4-1/8" and 28" Extension Tubes, Male Connector, Wedge Head, Serrated Saddle, Flat Base, Ram Toe, Plunger Toe, Rubber Head, 90° Combination Head, Spreader, Dust Cover (for Hose), Dust Cover (for Ram), Hose Coupler, Ram Coupler and Blow Mold Case



4 Ton Porto
Power Kit

- SKU 964658 PPBB65114 **199⁹⁹**

10 Ton Porto
Power Kit

- SKU 964663 PPBB65115 **354⁹⁹**
- Snap-Lock Design for Quick and Easy Assembly
 - Automatic Pump Overload System Protects Against Damage to Rams and Equipment
 - 1/2 Ton Capacity Hydraulic Spreader Features 2" Jaws and Spreads from 5/8" to 3-3/4"
 - Custom Fitted, Rugged Blow Molded Storage Case With Wheels for Easy Movement Between Jobs



SAVE \$25

4 Ton Porto Power Kit

- SKU 301327 24820 **124⁹⁹** REG. \$149.99
- Long Handle Provides Low Pumping Effort
 - Comes in a Blow Mold Case

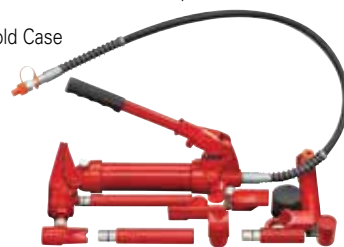


Offer Good Through
December 31, 2016
While Supplies Last

SAVE \$40

10 Ton Porto Power Kit

- SKU 301328 24821 **219⁹⁹** REG. \$259.99
- Features a Faster (Double-Action) Hydraulic Pump Causing the Ram to Move With Both the Up and Down Strikes of the Arm
 - Comes in a Blow Mold Case



Offer Good Through
December 31, 2016
While Supplies Last

JACKS AND HYDRAULICS

SAVE \$100

Vehicle Position Jacks With Storage Cradle

SKU 696485
68986 **449⁹⁹** REG: \$549.99

- Includes (4) Position Jacks With Storage Stand
- Move Up to a 6,000 Lbs. Vehicle With Ease Adjusts 3.25"

Offer Good Through December 31, 2016 While Supplies Last

OEM TOOLS



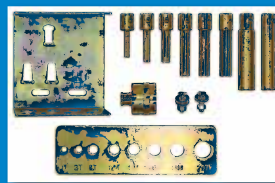
BONUS Shop Press Pin Set

SKU 544794 | PART# 24813

Value: \$99.99

- Includes Set of (8) Press Pins, 2 to 20 Ton Capacity, With 25 mm Ram Adapter
- Suitable for Use With Hydraulic Ram Style Shop Presses Which Have a Female Ram Assembly Diameter of 25 mm and are Secured With a Bolt
- Includes Mountable Bracket
- Works With OEMTOOLS 24811 and 24812
- Not for Use With Bottle Jack Style Shop Presses

OEM TOOLS



With Purchase of:
12 Ton Hydraulic Shop Press w/ Gauge

SKU 544790 | Part# 24811

OR
20 Ton Air/Hydraulic Shop Press w/ Gauge

SKU 544793 | Part# 24812

OEM TOOLS

20 Ton Shop Press

SKU 300134
24810 **379⁹⁹**

- Remove and Install Bearings, Gears, U-Joints, Bushings, Ball Joints and Pulleys
- Multi-Position Bed for Work Height Adjustment
- Max. Height: 31.5"
- Max. Width: 21.75"
- Includes Press Plates



Super Heavy Duty H-Frame Press Weighs Over 250 Lbs. Providing More Strength And Durability Compared to Similar Lighter Weight Shop Presses On the Market

BUY TWO JACKS FOR \$219.99 SAVE \$39.99

Two 1,500 Lbs. Vehicle Position Jacks

SKU 298098
24855TWO **219⁹⁹**

- Hydraulic Ram Provides Stable Foot Pedal Lift in Seconds
- Rolls in Any Direction

One 1,500 Lbs. Vehicle Position Jack

SKU 544798
24855 **129⁹⁹**

Offer Good Through December 31, 2016 While Supplies Last

OEM TOOLS



SAVE \$30

1,250 Lbs. Engine Stand

SKU 462493
24829 **99⁹⁹** REG: \$129.99

- Easy-to-Move and Rotate
- Heavy Gauge Square Steel Tube Frame
- Extra Wide 4 Wheel Base Provides Added Stability
- 360° Rotation
- Lock Pin Locks Engine into Position
- Includes Tool Tray

Offer Good Through December 31, 2016 - While Supplies Last



SAVE \$50

1 Ton Folding Engine Stand

SKU 544804
24834 **199⁹⁹** REG: \$249.99

- Folds Upright to Conserve Valuable Floor Space
- Sturdy, Wide Base Design to Prevent Tipping Under Load
- Slotted Adjustable Saddle Permits Quick and Easy Installation
- Head Swivels 360° to Easily Position Engine

Offer Good Through December 31, 2016 - While Supplies Last

OEM TOOLS



Engine Stands

1,250 Lbs. Engine Stand

SKU 534418
OMG31250 **179⁹⁹**

- Constructed from Heavy Gauge Welded Square Tubular Steel
- Extra Long Handle With Rubber Grips for Easy Rotation and Maneuvering

1,250 Lbs. Rotating Engine Stand

SKU 964646
OMG31256 **339⁹⁹**

- Extra Long Handle With Rubber Grip for Easy Rotation and Maneuvering
- Head Plate Locks in 8 Positions and Rotates 360°
- Heavy Duty Worm Gear Allows for Smooth and Effortless Engine Rotation



Wheel Dollies

Vehicle Position Jack Storage Rack

SKU 544800
24856 **59⁹⁹**

- Neatly Secure and Store Up to (4) Vehicle Car Dolly Jacks
- Dimensions: 24-7/8" (L) x 31-7/8" (W) x 9-9/16" (H)
- 5" x 1" 360 Degree Swivel Ball Bearing Wheels for Easy Maneuvering
- Weight Capacity: 300 Lbs.



Engine Lifts

2 Ton Capacity Engine Hoist

SKU 123037
80-900T **229⁹⁹**

- 8 Ton Capacity Hydraulic Jack for Faster and Easier Raising Action
- Large Diameter Ram to Withstand Side Loads
- 4 Position Telescoping Boom is Adjustable from 1/2 Ton to 2 Ton Capacity
- Legs are Over 55" Long for Greater Stability



Duralast

2 Ton Folding Shop Crane

SKU 544801
24830 **399⁹⁹**

- Foldable Design Makes for Convenient, Easy Storage
- (6) Solid Steel Caster Wheels Add Mobility
- Fully Adjustable 4 Position Boom



OEM TOOLS

2 Ton Folding Engine Crane

SKU 902288
RANRSC2TF **499⁹⁹**

- Heavy Duty Hydraulic Folding Engine Hoist With 8 Ton Capacity Ram is Perfect for Shops That Have Limited Space but Still Need the Pure Lifting Convenience of a Crane
- Front Casters Include a Safety Brake to Prevent Movement



Ranger

Bearing Splitter, 1/2" to 4-5/8"

SKU 514006
27232 **59⁹⁹**

- Razor Sharp Edges Wedge Between Parts and Securely Holds Tool
- Maximum Spread: 4-5/8"
- Minimum Spread: 1/2"
- Thread of Tapped Holes in Adapter: 5/8" - 18
- Distance Between Adjusting Screws: 4-3/8"



Bearing Splitter, 1/4" to 15/16"

SKU 514005
27231 **29⁹⁹**

- Maximum Spread: 15/16"
- Minimum Spread: 1/4"
- Thread of Tapped Holes in Adapter: 5/16" - 18
- Distance Between Adjusting Screws: 1-11/16"



Engine Supports

GM Engine Moving Tool

SKU 511006
THX419X **59⁹⁹**

- Fits GM Front Wheel Drive Vehicles With Engine Torque Struts
- Safely Holds Engine in Place
- Extra Bolt Holes Provide Fit on All Vehicles
- Includes Adapter 419A



3 Point Engine Support Bar

SKU 133617
24951 **79⁹⁹**

- Makes Removal of Transaxle Easy by Supporting Engine of Front Wheel Drive Vehicles
- 700 Lbs. Capacity
- (2) 14" Adjustable Hook Screws
- Width Expands from 34-1/2" to a Full 61"
- (2) 38" Braided Steel Cables



OEM TOOLS

1,100 Lbs. Engine Support

SKU 512946
24950 **119⁹⁹**

- (2) Screw Adjusters for Precise Positioning - Makes Job Easier, Faster and Safer
- Rubber Feet to Prevent Damage to Vehicle and Ensure Stability
- 1,100 Lbs. Capacity



LOWER PRICE

2 HOOKS - 2 CHAINS
Twice the Adjustment Means Faster, Easier AND Safer

OMEGALIFT™
EQUIPMENT

Omega Service Jacks are Made for Working Professionals, They Offer the Features and Durability That Professionals Demand, But at a Price That Won't Break the Bank.

The Omega Low Profile Jack is designed With a fast-action pump and u-joint assembly for precise lowering and load control. These new Low Profile Jacks from Omega are ideal for today's vehicles.

2 Ton Low Profile Service Jack

- SKU 847093
OMG29021
- 219⁹⁹
- Dual Fast Action Pump Piston
 - U-Joint Assembly for Precise Load Control
 - Minimum Height: 3.13" Maximum Height: 19.88"
 - Gross Weight: 70 Lbs



2 1/2 Ton Low Profile Service Jack

- SKU 847094
OMG29027
- 229⁹⁹
- Dual Fast Pump Piston
 - U-Joint Assembly for Precise Load Control
 - Minimum Height: 2.9" Maximum Height: 20"
 - Gross Weight: 71 Lbs



2 1/2 Ton Low Profile "Magic Lift" Jack

- SKU 847105
OMG29028
- 189⁹⁹
- Foam Handle Cover
 - U-Joint Assembly for Precise Load Control
 - Minimum Height: 3.35" Maximum Height: 19.3"
 - Gross Weight: 69.5 Lbs



3 Ton Low Profile Service Jack

- SKU 847096
OMG29033
- 299⁹⁹
- Dual Fast Action Pump Piston
 - U-Joint Assembly for Precise Load Control
 - Minimum Height: 3.54" Maximum Height: 20.50"
 - Gross Weight: 91 Lbs



3 Ton Low Profile "Magic Lift" Jack

- SKU 847106
OMG29031
- 199⁹⁹
- Foam Handle Cover
 - U-Joint Assembly for Precise Load Control
 - Minimum Height: 3.75" Maximum Height: 19.75"
 - Gross Weight: 75.3 Lbs



3 1/2 Ton Low Profile "Magic Lift" Jack

- SKU 847107
OMG29038
- 219⁹⁹
- Foam Handle Cover
 - U-Joint Assembly for Precise Load Control
 - Minimum Height: 4" Maximum Height: 21"
 - Gross Weight: 83.7 Lbs



2 1/2 Ton Low Profile "Magic Lift" Jack and 3 Ton Jack Stand Combo

- SKU 847101
OMG25055
- 219⁹⁹
- Foam handle cover
 - Jack - Minimum Height: 3.35", Maximum Height: 19.3"
 - Stands - Minimum Height: 11.5", Maximum Height: 17" Maximum Height: 20.50"
 - Gross Weight: 91 Lbs



Patented "Magic Lift" design features a one pump to load quick lift for professional performance

OMEGALIFT™
EQUIPMENT

The Omega Hybrid Jack combines aluminum and steel resulting in a strong, lightweight jack frame With extra wide wheels for increased stability when fully loaded. Together With a dual piston high speed pump, side handles for ease of carrying and u-joint style control valve make this the ideal jack to go from the shop to your truck to the racetrack.

1 1/2 Ton Aluminum/Steel Hybrid Jack

- SKU 847097
OMG26017
- 219⁹⁹
- Combines Aluminum and Steel for a Lightweight, Strong Jack Frame
 - Extra Wide Wheels for Increased Stability
 - Dual Piston Speedy Lift Lightweight Service Jack
 - Minimum Height: 3.35" Maximum Height: 13.78"
 - Gross Weight: 32.88 Lbs



2 1/2 Ton Aluminum/Steel Hybrid Jack

- SKU 847099
OMG26028
- 269⁹⁹
- Combines Aluminum and Steel for a Lightweight, Strong Jack Frame
 - Extra Wide Wheels for Increased Stability
 - Single Piston Magic Lift Lightweight Service Jack
 - Minimum Height: 3.86" Maximum Height: 18.62"
 - Gross Weight: 57.27 Lbs



3 Ton Aluminum/Steel Hybrid Jack

- SKU 847104
OMG26033
- 329⁹⁹
- Combines Aluminum and Steel for a Lightweight, Strong Jack Frame
 - Extra Wide Wheels for Increased Stability
 - Single Piston Magic Lift Lightweight Service Jack
 - Minimum Height: 3.74" Maximum Height: 19.09"
 - Gross Weight: 70.48 Lbs



OMEGALIFT™
EQUIPMENT

3 Ton Aluminum Jack

- SKU 847102
OMG26030
- 369⁹⁹
- All Aluminum Structure Provides Strength and Stability
 - Side Frame Handles Allow for Easy Carrying
 - U-Joint Assembly for Precise Load Control
 - Minimum Height: 2.91" Maximum Height: 20.12"
 - Gross Weight: 44lbs



OMEGALIFT™
EQUIPMENT

2,000 Lb. Heavy Duty 3-in-1 Car Dolly Set

- SKU 296929
OMG47020
- 299⁹⁹
- NEW
- Holds Vehicle: By the Wheel, By the Pinch Weld or By the Frame
 - No Adapters Required
 - Integrated Frame Adapters
 - Locking Casters
 - Self-Stacking for Convenient Storage
 - Sold in Pairs of Two



3/4 Ton Quick Lift Telescopic Transmission Jack

- SKU 338731
BHKBP407
- 1,599⁹⁹
- PLATINUM SERIES™
5 YEAR WARRANTY
- Dual-Pedal Pump Design for Quick Lift Action and Fine Tuning
 - Chrome Plated Ram for Long Life
 - Maximum Height: 82.38", Minimum Height: 42.61", Base Dimensions: 33.07" x 35.55"
 - User Selected Dual Pump Pistons
 - High Cycle Durability
 - Longer Saddle Supports
 - Improved Bearing Surfaces
 - High/Low Temp Functionality
 - Conforms to ASME-PALD 2009 Safety Standards



JACKS AND HYDRAULICS



All TCE products carry a two (2) year limited warranty.



12 Ton Stubby
Lifting range: 6-5/8" to 9-15/16"
SKU 451483
TCE91208 **84⁹⁹**

20 Ton Stubby
Lifting range: 7-1/8" to 10-1/2"
SKU 451487
TCE92008 **119⁹⁹**



12 Ton Manual
Lifting range: 9" to 18-1/8"
SKU 451480
TCE91207 **84⁹⁹**

20 Ton Manual
Lifting range: 10-7/8" to 18-3/8"
SKU 451486
TCE92007 **119⁹⁹**



12 Ton Air/Hyd
Lifting range: 10-7/16" to 20"
SKU 451478
TCE31000 **199⁹⁹**

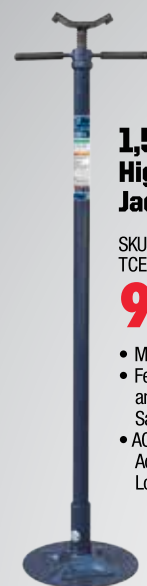
20 Ton Air/Hyd
Lifting range: 10-7/16" to 20"
SKU 451479
TCE31001 **229⁹⁹**



7 Ton Square Tube Vehicle Support Stand
(Sold in Pairs)
SKU 451490
TCE47000 **119⁹⁹**
Adjustment Range: 9-5/8" to 15-3/8"



4 Ton Auto Body Repair Ram System
Min. Ram Stroke 10-3/4" Max. Ram Stroke 15-5/8"
SKU 451492
TCE70401 **159⁹⁹**

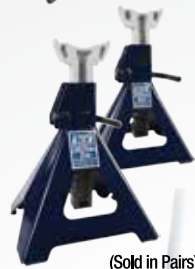


1,500 lbs. High Position Jack Stand
SKU 451493
TCE40753 **99⁹⁹**

- Max Height 79-7/8"
- Featuring Heavy-Duty Steel and High-Strength Welds for Safety in Mind
- ACME All Thread Rod Adjustment for Varied Load Heights



10 Ton Round Tube Vehicle Support Stand
SKU 451491
TCE41000 **164⁹⁹** each
Adjustment Range: 28-3/8" to 46-7/8"



Vehicle Support Stand
4 Ton Adjustment Range: 12-3/16" to 18-7/8"
SKU 451488
TCE44008 **79⁹⁹**
7 Ton Adjustment Range: 16-5/16" to 25-3/16"
SKU 451489
TCE47008 **119⁹⁹**
(Sold in Pairs)



1 Ton Transmission Jack
Saddle Forward Tilt 68 Degree
Saddle Reverse Tilt 15 Degree
Rated Capacity: 2000 Lbs.
Lifting Range: 8-1/4" to 30-5/8"
SKU 451476
TCE10001 **629⁹⁹**



1,000 lbs. Telescoping Transmission Jack
Double Ram for a Lower Profile
Saddle Forward Tilt 30 Degree
Saddle Reverse Tilt 12 Degree
Lifting Range: 35" to 70-1/2"
SKU 451475
TCE50055 **749⁹⁹**



Dual Piston Pump



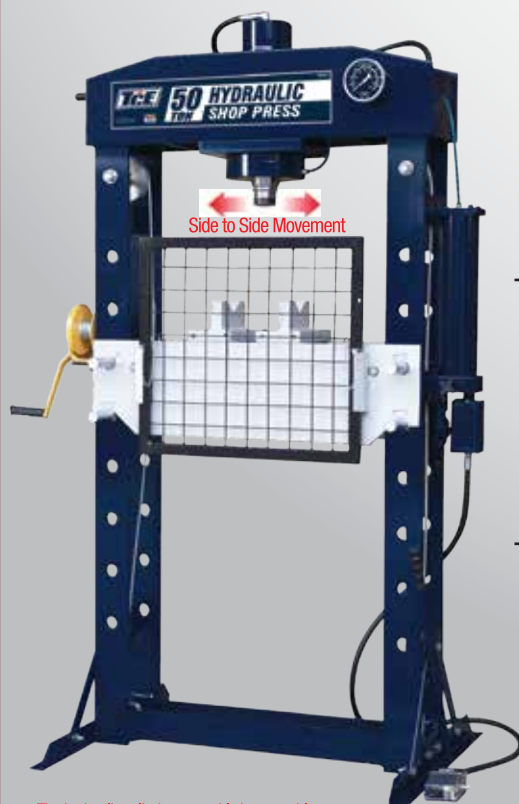
2 Ton Tri-Fold High Position Jack Stand
SKU 451494
TCE42009 **109⁹⁹**
• Max Height 83-3/4"



6,500 lbs (3 1/4 Ton) Professional Garage Jack
Lifting Range: 3-13/16" to 21-1/8"
Designed for the Shop Guys with Work in Mind and Security Guaranteed
• Dual Pump Pistons for Faster Rising Action
• Thick U-Channel Frame Side Plates and Reinforced Lifting Arm
• Tubular Grip Handle That Provides Easy Handling
• Rubber Saddle Pad and Foam Bumper Pad
SKU 451485
TCE83508 **199⁹⁹**



4,000 lbs (2 Ton) Ultra-Low Profile Garage Jack
Lifting Range: 3" to 20"
• Ultra-Low Profile Design Gives Clearance to Even High Performance Super Cars
• Heavy-Duty Tubular Grip Handle That Provides Easy Handling
• Patented Quad-Trak Designed Polyurethane Front Wheels That Get Over Any Bump or Crack with No Resistance
• Polyurethane Mounted Rear Swivel Caster Wheels
• Rubber Saddle Pad and Foam Bumper Pad
• Built-In Wheel Nut Tray
SKU 451477
TCE82002 **359⁹⁹**



20 Ton Shop Press
SKU 451481
TCE20021 **899⁹⁹**
Force: 40,000 lbs
Bed Internal Dimension: 21-5/8"
Working Range: 0" to 39-3/8"
Stroke: 7-1/2"

30 Ton Shop Press
SKU 451472
TCE30021 **1,099⁹⁹**
Force: 60,000 lbs
Bed Internal Dimension: 21-5/8"
Working Range: 2" to 44-1/2"
Stroke: 5-7/8"

50 Ton Shop Press
SKU 451473
TCE50021 **1,899⁹⁹**
Force: 100,000 lbs
Bed Internal Dimension: 27-15/16"
Working Range: 2-5/8" to 36-1/4"
Stroke: 7-1/2"

The hydraulic cylinder assembly is moveable and equipped with a locking device on all models. Great for hard to maneuver parts.



40 Ton Shop Press
Force: 80,000 lbs
Bed Internal Dimension: 27.12"
Working Range: 0" to 35.04"
Stroke: 6.89"
SKU 335338
TRD54003 **799⁹⁹**

45 Ton Shop Press
Force: 90,000 lbs
Bed Internal Dimension: 25.38"
Working Range: 0" to 34.06"
Stroke: 6.89"
SKU 103248
TRD54501 **899⁹⁹**

50 Ton Shop Press
Force: 100,000 lbs
Bed Internal Dimension: 27-15/16"
Working Range: 2-5/8" to 36-1/4"
Stroke: 7-1/2"
SKU 342096
TRD55002 **999⁹⁹**

- Heavy-duty H-frame.
- Air pneumatic pump with trigger push-button control
- Bends, presses and straightens
- Gauge dial
- Double spring ram return



Rolling Tool Cart
SKU 988851
TC325C **199⁹⁹**

- Ideal for both domestic and industrial use.
- Manufactured of heavy gauge steel.
- Work surface with slip resistant rubber mat.
- Four wheels for easy maneuvering.



Mobile Work Station
SKU 988853
TC327 **289⁹⁹**

Leasing Terms Available!†
Ask Your AutoZone®
Commercial Sales Manager

AutoZone®
Tool & Equipment QUARTERLY

Precise Fit & Quality Performance For Nearly Every Car on the Road

With 100,000+ parts, and 750+ part types, Duralast has you covered — even for hard-to-find and dealer-only parts. When you choose Duralast, you can rest assured knowing your part will match, or improve OE form, fit and function. Our engineers inspect OE parts to find failure points, and make product enhancements to eliminate them.

100,000+
part numbers

Hard-to-find parts

750+ part types

In-stock & special
order available

Duralast™
VEHICLE ELECTRONICS

DESIGNED FOR OE FORM, FIT AND FUNCTION

AutoZonePro.com