

# TIRE SERVICE



# DID YOU KNOW?

AutoZone® carries Weather-Tech® brand of floor mats and other Weather-Tech® accessories.  
Contact Your AutoZone Commercial Sales Manager for Details

## TUXEDO DISTRIBUTORS LLC

Automotive Equipment & Accessories

Tuxedo Distributors LLC is a leading importer of high quality automotive repair equipment offering a full line of automotive equipment at an economical price. With our 10 satellite warehouses strategically located across the US, we offer an unparalleled competitive advantage.

Call to place order!  
817.558.9337  
877.558.9337 Toll Free

### WHEEL SERVICE

**TC-530**  
Semi-Automatic Tire Changer  
SKU **426751**

- Internal Clamping Capacity: 12" - 23"
- External Clamping Capacity: 10" - 20"
- Max Wheel Diameter: 38"
- Wheel Width: 3" - 12"
- Swing arm design
- Bead seating inflation jets are integrated in the clamping jaws
- Side mounted Bead Breaker

Price Does Not Include Installation or Optional Equipment as Shown



TUXEDO

**TC-950**  
Semi-Automatic Tire Changer  
SKU **426755**

- Max Wheel Diameter: 47"
- Rim Width: 3" - 15"
- Rim Diameter: 15" - 28"
- Working Pressure: 8-10 bar
- Swing arm design
- No scratching. Machine contacts rim eliminating accidental damage
- Conveniently located and powerful bead breaker

Price Does Not Include Installation or Optional Equipment as Shown



TUXEDO

**TC-950WPA**  
High Performance Tire Changer with Press Arm  
SKU **426757**

- Internal Clamping Capacity: 15" - 28"
- External Clamping Capacity: 13" - 24"
- Max Wheel Diameter: 47"
- Wheel Width: 3" - 15"
- Swing arm design
- Bead seating inflation jets are integrated in the clamping jaws
- Twin clamping cylinders provide more power to hold the most difficult rims
- Conveniently located and powerful bead breaker
- Large diameter hex mount/demount shaft for extra rigidity
- Left side press arm (WPA)
- Ideal for low profile tires (WPA)
- No scratching, machine never contacts rim (WPA)

Price Does Not Include Installation or Optional Equipment as Shown



TUXEDO

### NEW COMBO PRICING!

**TC-950**  
Semi-Automatic Tire Changer  
• Max Wheel Diameter: 47"  
• Rim Width: 3" - 15"  
• Rim Diameter: 15" - 28"



Price Does Not Include Installation or Optional Equipment as Shown



**WB-953**  
High Performance Wheel Balancer  
• Max Wheel Diameter: 39"  
• Rim Width: 1.5" - 20"  
• Rim Diameter: 10" - 24"  
• Wheel Weight Capacity: 150 lbs

SKU <b>426755</b>	TC-950 Tire Changer	<b>\$1,599.99</b>
SKU <b>426803</b>	WB-953 Wheel Balancer	<b>\$1,099.99</b>
	Regular Price	<b>\$2,699.98</b>
SKU <b>880175</b>	COMBO PRICE	<b>\$2499.99</b>
	SAVINGS	<b>\$199.99</b>

**WB-953-B**  
High Performance Wheel Balancer  
SKU **592171**  
• Max Wheel Diameter: 39"  
• Rim Width: 1.5" - 20"  
• Rim Diameter: 10" - 24"  
• Wheel Weight Capacity: 150 lbs  
• Self-calibrating; Self-diagnosis  
• Optimization program  
• Static balancing  
• Three centering cones  
• Hammer, speed nut and caliper come standard  
• Optional motorcycle adapter is available

Price Does Not Include Installation or Optional Equipment as Shown



TUXEDO

**WB-953**  
High Performance Wheel Balancer  
SKU **426803**  
• Max Wheel Diameter: 39"  
• Rim Width: 1.5" - 20"  
• Rim Diameter: 10" - 24"  
• Wheel Weight Capacity: 150 lbs  
• Self-calibrating; Self-diagnosis  
• Optimization program

Price Does Not Include Installation or Optional Equipment as Shown



TUXEDO

**1,022<sup>99</sup>**

**1,099<sup>99</sup>**

- Static balancing
- Three centering cones
- Hood, hammer, speed nut and caliper come standard
- Optional motorcycle adapter is available

**IWA-60-1500-K**  
Image Wheel Aligner  
SKU **592176**

- High Resolutions Cameras
- Mobile Multi-Bay Capable
- Non-proprietary Windows PC
- Wireless Internet Connection
- German Engineered Alignment Software
- Advanced Alignment Measurements with Reading/Specifications and Cross Values
- Comprehensive Database 25+ Spec Years

- Illustration Diagrams
- Integrated Help System
- Non-proprietary Windows PC
- Works with multiple style alignment lifts
- Expert USA technical support
- UPS with AVR Included



Price Does Not Include Installation or Optional Equipment as Shown

IDEAL

Additional Charges for lift gate delivery may apply

**WB-CB66-VE**  
High Performance Large Wheel Balancer  
SKU **592163**

- Keypad Data Entry
- Max Wheel Diameter: 44"
- Rim Width: 1.5" - 20"
- Rim Diameter: 8" - 28"
- Wht Weight Cap: 150lbs
- Accuracy: 1 gram
- Three centering cones
- Hood, hammer, speed nut and caliper come standard
- Multi-Mode Balancing for SUV, Car & Motorcycle
- Laser and Light indicators for unbalanced wheel weight positions
- Foot Brake for accurate weight applications

Price Does Not Include Installation or Optional Equipment as Shown



TUXEDO

**1,249<sup>99</sup>**

### FRAME MACHINES

**FR-77-18**  
Steel Plate / 18'  
SKU **426651**

**13,199<sup>99</sup>**

**FR-77-20**  
Steel Plate / 20'  
SKU **592195**

**14,299<sup>99</sup>**

**FR-77T-18**  
Tubular / 18'  
SKU **592192**

**10,799<sup>99</sup>**

**FR-77T-20**  
Tubular / 20'  
SKU **592193**

**11,399<sup>99</sup>**



Price Does Not Include Installation or Optional Equipment as Shown

- Lifting Capacity: 7,700 lbs.
- Deck Length: 18' / 20'
- Deck Width: 82.6"
- Deck Height: 19.7
- Pull Force Per Tower: 10 Ton
- Required Air Power: 100 - 120 PSI
- Designed to accommodate Full-frame or Uni-body type vehicle
- Hydraulic Tilt Deck operation
- Universal Anchoring System
- Clear Floor, 360 degree Pulling Capability
- Twin 10 Ton round Pull Towers w/telescoping Tower-Heads

IDEAL

\*20 and 25 Piece Tool Board Kit Sold Separately

### DURO HYDRAULICS



### SPXFLOW



### POWER UNITS

**PU-110V-S-K**  
SKU **426832**  
•110VAC-1.5GAL  
•2.5HP

**429<sup>99</sup>**

**PU-220V-L-H**  
SKU **426847**  
•220VAC-3.5GAL  
•2.5HP

**429<sup>99</sup>**

**PU-110V-L-K**  
SKU **426833**  
•110VAC-3.5GAL  
•2.5HP

**429<sup>99</sup>**

**PU-220V-L-H-X**  
SKU **094226**  
•220VAC-3.5GAL  
•2.5HP

**429<sup>99</sup>**

**PU-110V-S-S**  
SKU **426834**  
•115VAC-1.5GAL  
•1HP

**499<sup>99</sup>**

**PU-S-AB-1270**  
SKU **426850**  
•230VAC-3.5GAL  
•2HP

**549<sup>99</sup>**

**PU-110V-L-S**  
SKU **426839**  
•115VAC-3.5GAL  
•1HP

**499<sup>99</sup>**

**PU-S-AC-10AH**  
SKU **426568**  
•230VAC-3.5GAL  
•2HP

**529<sup>99</sup>**

### CAR ROTISSERE

**CR-3000**  
Car Rotisserie  
SKU **426594**

**1042<sup>99</sup>**

- 3,000 lb. capacity
- Heavy-duty balancing system
- Securely locks at any angle
- Adjustable working height with hydraulic operation
- Four 16" mounting arms
- Three piece telescoping center bar
- Six 3" phenolic resin swivel casters
- Powder coated finish

Price Does Not Include Installation or Optional Equipment as Shown



TUXEDO

### PAINT BOOTHS

**PSB-AFCF23B-3PH-230V-AK**  
CROSS FLOW DRAFT PAINT SPRAY BOOTH  
SKU **799158**

- Inside Dimension: 22'L x 13'W x 8'6"H
- Outside Dimension: 25'-4"L x 13'-4"W x 8'- 10"H
- Fan / Motor: 24" Tube Axial Fan 3HP-3PH-230/460VAC-60HZ Non-Spark, NEMA RATED

- High Quality UL Listed lighting fixtures. (Bulbs Included)
- Tilt Panel Design for optimal lighting coverage
- 5/16" Nut & Bolt Installation
- High Quality Intake and Exhaust Filters
- Heavy Duty 18 Gauge Panel Construction
- Personnel Door with Viewing Window
- Powder Coated Finish (Inside and Out)
- UL Control Panel, limit switches and solenoid value included
- All hardware included
- Detailed Instructions

Price Does Not Include Installation or Optional Equipment as Shown

IDEAL

**10,099<sup>99</sup>**



**PSB-SDD26B-3PH-230V-AK**  
SIDE DOWNDRAFT PAINT SPRAY BOOTH  
SKU **592190**

- Inside Dimension: 26'L x 14'W x 9'3"H
- Outside Dimension: 26'-4"L x 17'-8"W x 9'- 5"H
- Fan / Motor: (2x) 24" Tube Axial Fans 2HP-3PH-230/460VAC-60HZ Non-Spark, NEMA RATED

- High Quality UL Listed lighting fixtures. (Bulbs Included)
- Hip Roof Design for Optimal Lighting
- 5/16" Nut & Bolt Installation
- (2x8") Exhaust Chimney Stack Assemblies Included
- High Quality Intake and Exhaust Filters
- Heavy Duty 18 Gauge Panel Construction
- Tri-fold and Personnel Doors with Viewing Windows.
- Powder Coated Finish (Inside and Out)
- UL Control Panel, limit switches and solenoid value included
- All hardware included
- Detailed Instructions
- Optional Plenum Kit Sold Separately

Price Does Not Include Installation or Optional Equipment as Shown

IDEAL

**15,599<sup>99</sup>**



\*Optional Plenum Kit Shown



# AUTOMOTIVE LIFTS



**TUXEDO**  
Distributors LLC  
Automotive Equipment & Accessories

Tuxedo Distributors LLC is a leading importer of high quality automotive repair equipment offering a full line of automotive equipment at an economical price. With our 10 satellite warehouses strategically located across the US, we offer an unparalleled competitive advantage.

Call to place order!  
817.558.9337  
877.558.9337 Toll Free

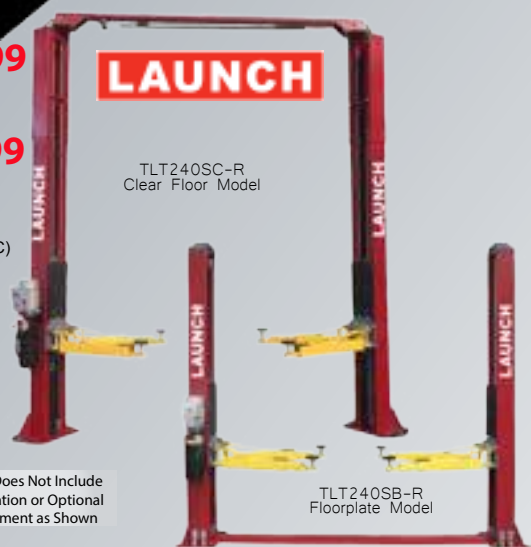
## TWO POST LIFTS

**TLT240SC-R** **2,199<sup>99</sup>**  
9,000lbs CAPACITY  
SKU **426404**

**TLT240SB-R** **2,099<sup>99</sup>**  
9,000lbs CAPACITY  
SKU **426403**

- Overall Height: 151" (TLT240SC)
- Overall Width: Symm 134", Asymm 140" (TLT240SC)
- Overall Height: 113" (TLT240SB)
- Overall Width: 133" (TLT240SB)
- Rubber Door Guards
- Hose Guards
- Stackable Footpad Extensions - four 3.5"
- Dual Point Lock Release
- Heavy-Duty Arm Restraint System
- Double Telescoping Screw Pads
- Adjustable Column Width (TLT240SC)
- Standard or Rotated Asymmetric Columns (TLT240SC)

Price Does Not Include  
Installation or Optional  
Equipment as Shown



**TLT210-XT-B** **3,099<sup>99</sup>**  
10,000lbs CAPACITY  
SKU **426407**

- Overall Height: 149"
- Overall Width: Symm 137", Asymm 138"
- Heavy-Duty Arm Restraint System
- Adjustable Column Height
- Adjustable Column Width
- Outer Hose Guards
- Stackable Foot Pad Extensions four 6" and four 3"
- 3 Stage Front Arms
- Rubber Door Guards
- Single Point Lock Release
- Standard or Rotated Asymmetric Arm Configuration
- Double Telescoping Screw Pads

\*Available in red and blue



**TP9KACX** **1,949<sup>99</sup>**  
9,000lbs CAPACITY  
SKU **426138**

**TP9KFX** **1,949<sup>99</sup>**  
9,000lbs CAPACITY  
SKU **426106**

- Overall Height: 143" (TP9KACX)
- Overall Width: 138" (TP9KACX)
- Overall Height: 112" (TP9KFX)
- Overall Width: 134.5" (TP9KFX)
- Chain Driven
- Dual cylinders with low friction chain rollers
- Low profile arms
- Spin Up Pads with 1-1/2" and 4" stackable drop-in height adapters
- Padded over head shut off bar
- Powder-Coated Finish
- Rubber Door Guards



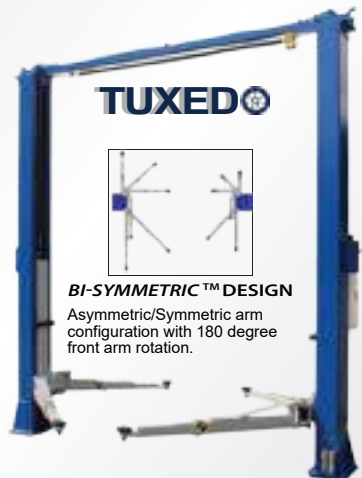
TP9KACX  
Clear Floor Model

Price Does Not Include  
Installation or Optional  
Equipment as Shown

**TP11KC-DX** **2,699<sup>99</sup>**  
11,000lbs CAPACITY  
SKU **426140**

- Direct "Pull" Cylinders
- Overall Height: 145"
- Overall Width: 145-1/2"
- 3 Stage Front Arms, Low Profile Arms
- Asymmetric/ Symmetric Arm Configuration
- Symmetric Columns
- Single Point Lock Release
- Rubber Door Guards
- Spin Up Pads with 2" and 4" stackable drop in Height Adapters
- Powder-Coated Finish
- Padded Overhead shut off bar

Price Does Not Include  
Installation or Optional  
Equipment as Shown



**BI-SYMMETRIC™ DESIGN**  
Asymmetric/Symmetric arm  
configuration with 180 degree  
front arm rotation.

## MOBILE COLUMN

**MSC-6KLP** **2,999<sup>99</sup>**  
6,000 lbs  
Single Column Lift  
SKU **426460**

- Capacity: 6,000 lbs
- Width Overall: 45-3/16"
- Height Overall: 102-3/8"
- Length Overall: 101-9/16"
- Improved Low Profile design with less than 4" minimum height!
- Pallet Style Operation
- Improved 'double telescoping' Screw Pads with 2-3/4" adjustable height!
- Pallet Jack style hydraulics to raise lift onto wheels
- Single Point Lock Release
- Powder coat paint finish
- 110VAC / PN



Price Does Not Include  
Vehicles, Installation or  
Optional Equipment  
as Shown

**IDEAL**

## SERVICE / ALIGNMENT LIFTS



Bridge Jacks sold separately

**FP14KA-C** **5,279<sup>99</sup>**  
14,000lbs CAPACITY  
SKU **426440**

- Overall Length: 250-1/2"
- Overall Width: 136-3/4"
- Width Between Post: 110"
- Column Height: 185"
- Lifting Height: 68-7/8"
- Base Plate Dimensions: 12" x 12"
- Closed Front
- Cable Driven
- Pneumatic Single Point Lock Release
- 3 each Turntable Positions

Price Does Not Include  
Installation or Optional  
Equipment as Shown

**TUXEDO**



Bridge Jacks sold separately

**FP14K-C** **4,822<sup>99</sup>**  
14,000lbs CAPACITY  
SKU **426438**

- Overall Height: 68-7/8"
- Overall Width: 136-3/4"
- Overall Length: 250-1/2"
- Cable Driven
- Closed Front
- Single point pneumatic safety release
- 20" wide non-skid, diamond plate runways
- Mounting Hardware included
- Powder-Coated Finish

Price Does Not Include  
Installation or Optional  
Equipment as Shown

## BRIDGE JACK



**TUXEDO**

**RAJ-8K-L** **1,449<sup>99</sup>**  
8,000lbs CAPACITY  
SKU **426452**

- Universal Roller Body Design w/dual 'spring loaded' precision roller bearing and Side Guide Wheels w/adjustable Height for Low, Medium, and High Jack Rail Configurations
- Rolls on top edge of Jack Rail for smooth maneuverability
- Dual Height Telescoping Support Arms
- Pneumatic operation w/adjustable Pressure Regulator
- Stackable Pad and Height Adapters 1 5/16" and 5" (1 Pair each)
- Dual Air Bags

Price Does Not Include  
Installation or Optional  
Equipment as Shown

**TP15KXC** **4,399<sup>99</sup>**  
15,000lbs CAPACITY  
SKU **426389**

- Overall Height: 180"
- Overall Width: 148"
- Chaindrive
- Padded Overhead shut-off bar
- Dual Point Lock Release
- Large 2' x3' Base Plates for Stability
- Rubber Door Guards
- Hose Guards
- Low Pad Height 5"
- Spin-Up Pads w/ 3" and 5" Stackable Drop-In Adapters
- Heavy Duty Arm Restraints
- Powder-Coated finish

Price Does Not Include  
Installation or Optional  
Equipment as Shown



**TUXEDO**

## HEAVY DUTY MOBILE COLUMN

**MSC-18K-X-6108** **38,599<sup>99</sup>**  
18,000lbs CAPACITY  
108K HD Mobile Column-6  
SKU **942101**

**MSC-18K-X-472** **25,999<sup>99</sup>**  
18,000lbs CAPACITY  
72K HD Mobile Column-4  
SKU **942100**

**MSC-18K-X-236** **13,399<sup>99</sup>**  
18,000lbs CAPACITY  
36K HD Mobile Column-2  
SKU **942099**

\*Batteries Not Included



**MSC18KX-CRSBM** **1,899<sup>99</sup>**  
CROSS BEAM  
SKU **942103**

**MSC18KX-LTVAK** **1,199<sup>99</sup>**  
LIGHT VEHICLE ADAPTER KIT  
SKU **942105**

**MSC-FORKSPCER** **699<sup>99</sup>**  
FORKLIFT FORK  
SPACE SET  
SKU **942107**

**MSC-FL-RAMPST** **1,299<sup>99</sup>**  
FORKLIFT RAMP SET  
SKU **942108**



**IDEAL**

Price Does Not Include  
Vehicles, Installation or Optional  
Equipment as Shown





# AUTOMOTIVE LIFTS



A Full Line of Lifts Available from



## 2 Post Lifts - 10K Lbs.

### Brigadier D-10 ACX

SKU 186433  
DAN1375647 **2,699<sup>99</sup>**

#### Asymmetric

- Lifting Capacity: 10,000 Lbs. (4,546 Kg)
- Overall Height: 145" (3,683 mm)
- Overall Width (Outside of Base Plates): 143-1/2"
- Width Between Columns: 112-3/4"
- Rise: 69" (1,753 mm)
- Maximum Lifting Height (Pad and 6" Adapter): 79" (2,007 mm)
- Drive-Thru Clearance: 100-1/2"
- Motor: 220 VAC 60Hz. 1Ph



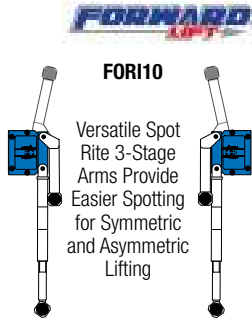
Truck Adapters Included  
Price Does Not Include Vehicles, Installation or Optional Equipment as Shown



### 10,000 Lbs. 2 Post Lift

SKU 499657  
FOR110 **2,999<sup>99</sup>**

- Low Profile 3-5/8" Min. Adapter Height
- Spot-Rite™ 3-Stage Front Arms for Symmetric and Asymmetric Lifting
- Overall Height: 143-3/8"
- Overall Floor Width: 137"
- Maximum Lifting Height: 76"
- Inside Column Width: 115"
- Drive-Thru Clearance: 105"
- Minimum Ceiling Height: 144"



Versatile Spot Rite 3-Stage Arms Provide Easier Spotting for Symmetric and Asymmetric Lifting

### 10,000 Lbs. F10 2 Post Lift

SKU 818779  
FORF10N100MBL **2,699<sup>99</sup>**

- Low Profile/Oversized Pads to Raise Most Vehicles
- 3-Stage Front Arms for Symmetric and Asymmetric Lifting
- Includes (4) 3-1/2" and 5" Adapter Extenders
- Warranty: 6 Months Labor, 18 Months Parts, 5 Years Structural



Truck Adapters Included  
Price Does Not Include Vehicles, Installation or Optional Equipment as Shown

### 10,000 Lbs. 2 Post Lift with 2n1 Lifting Arms

SKU 912314  
AMM4TV21NSR1 **3,129<sup>99</sup>**

- 90" Offset 3-Stage Front and Rear Arms for Asymmetric or Symmetric Vehicle Positioning
- Adjustable Height and Width Setting
- Includes Door Bumper Guards and Lift Adapters
- Premium US Made Power Unit
- ALI/ETL Certified
- 148" Height



Offloading Available

### 12,000 Lbs. 2n1 Lift

SKU 765526  
AMM4T212NSR1 **4,399<sup>99</sup>**

### Offloading Service AMMOFFLOAD

**150<sup>00</sup>**

Stack Adapters Included



Value: **\$695**

Price Does Not Include Vehicles, Installation or Optional Equipment as Shown

### 10,000 Lbs. Dual Width Clearfloor 2 Post Lift, Screw Pad

- Expandable Top Beam Accommodates Wide or Narrow Drive-Thru Configuration
- Double Telescoping Screw Pads Offer Increased Versatility
- Overall Height: 145"



Symmetric  
SKU 296968 | BENXPR-10S

**3,019<sup>99</sup>**

- Inside Columns: 105.5" - 118.5"

Truck Adapters Included  
Price Does Not Include Vehicles, Installation or Optional Equipment as Shown

Asymmetric  
SKU 297001 | BENXPR-10AS

**3,049<sup>99</sup>**

- Inside Columns: 104" - 112"

Symmetric Low-Pro Arms  
SKU 296983 | BENXPR-10S-LP

**3,049<sup>99</sup>**

- Inside Columns: 105-1/2" -118-1/2"

Asymmetric Low-Pro Arms  
SKU 297003 | BENXPR-10ASLP

**3,089<sup>99</sup>**

- Inside Columns: 104" - 112"

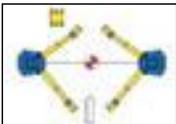


Five Years (60 Months) Warranty on the Lift Structure

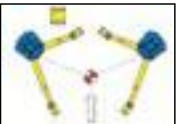
### SA10 10,000 Lbs. 2 Post Vehicle Lift

SKU 847098  
CHLSA10 **3,139<sup>99</sup>**

- Can Be Configured in Either the Symmetric or Asymmetric Position
- 3 Stage Front Arms Provide Greater Overall Arm Sweep
- Double Telescoping Screw Pads



Symmetric Column Orientation



Asymmetric Column Orientation



### E10 10,000 Lbs. 2 Post Lift

SKU 435061  
CHLLE10 **2,959<sup>99</sup>**

- 3-Stage Front Arms and 2-Stage Rear Arms for Asymmetric or Symmetric Lifting
- Double Telescoping Screw Pads with Rubber Foot Pads
- Rubber Door Guards Protect Vehicle from Door Damage
- 11' 11-7/8" Standard Height Fits in Service Bay with 12' Ceiling Height



Stack Adapters Included  
Price Does Not Include Vehicles, Installation or Optional Equipment as Shown



### 10,000 Lbs. 2 Post Lifts

SKU 534581 | ROTSPOA10  
**4,039<sup>99</sup>** Asymmetric

- Made in Madison, IN
- 3 Position Flip-Up Adapters
- 1 Year Labor and Parts Warranty

SKU 210371 | ROTSP010

**4,039<sup>99</sup>** Symmetric



Price Does Not Include Vehicles, Installation or Optional Equipment as Shown



### 10,000 Lbs. 2 Post Lift

SKU 298485  
CHLCL10V3 **4,229<sup>99</sup>**

#### Versymmetric 3-Stage Arms

- Designed to Lift Anything from a Compact Car to a Full Size Truck.
- Column Height: 11' 8"
- Adjustable Width Overall: 11' 6-1/2" / 11' 11"
- Floor to Overhead Switch: 134-1/2"
- Ceiling Height Required: 12'
- Drive-Thru Clearance: 100" / 104 -1/2"



Stack Adapters Included  
Price Does Not Include Vehicles, Installation or Optional Equipment as Shown



## 2 Post Lifts - 12K Lbs.

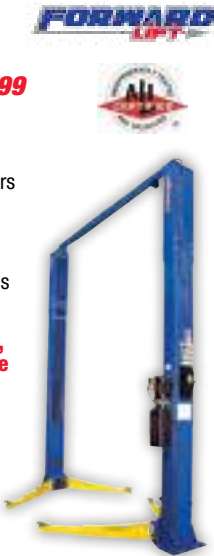
### 12,000 Lbs. F12N300 2 Post Lift

SKU 818751  
FORF12N300BL **4,479<sup>99</sup>**

- 2-Stage Arms Reach: 35" to 54"
- Accommodates Trucks and Many Cars
- Low Profile 4-3/4" Adapters
- Includes Four 3-1/2" and 5" Adapter Extenders
- Warranty: 6 Months Labor, 18 Months Parts, 5 Years Structural

Height Configurations of 11'- 10", 12'-10", and 14'-10" are Available

Truck Adapters Included  
Price Does Not Include Installation or Optional Equipment as Shown



### 12,000 Lbs. I12N300 2-Post Lift

SKU 818755  
FORI12N300BL

**5,499<sup>99</sup>**



3-Stage Front and Rear Arms

### 12,000 Lbs. 2 Post Lift, Clearfloor, Triple-Telescope Arms

SKU 296957  
BENXPR-12CL **4,669<sup>99</sup>**

- Drop-End Arms Provide a Lower Pad Height
- Triple-Telescoping Front and Rear Arms
- Height Overall: 170"
- Inside Columns: 120"



Truck Adapters Included  
Price Does Not Include Vehicles, Installation or Optional Equipment as Shown



### E12 12,000 Lbs. 2 Post Heavy Duty Lift

SKU 344994  
CHLE12 **4,589<sup>99</sup>**

- 2-Stage Telescoping Arms Provide Excellent Reach to Accommodate Vehicle Lifting Points
- 13' 10" or 14' 7" Adjustable Column Height
- Heavy-Duty Telescoping Screw Pads



Truck Adapters Included  
Price Does Not Include Vehicles, Installation or Optional Equipment as Shown



### CL12, 12,000 Lbs. 2 Post Symmetric Lift

SKU 750127  
CHLCL12 **6,629<sup>99</sup>**

- Lifts Small Sedans to Heavy Duty Pick Ups
- 3-Stage Front and 3-Stage Rear Arms Provide Greater Extension and Retraction
- Rise Height: 84-3/4" (2153 mm)
- Ceiling Height Required: 13' 9"



Truck Adapters Included  
Price Does Not Include Vehicles, Installation or Optional Equipment as Shown



• Free Delivery in 48 Continental United States • Specifications Subject to Change without Notice or Liability. Prices Do Not Include Vehicles, Installation or Optional Equipment as Shown. • Customers Responsible for Off-Loading Equipment Upon Arrival. Ask Your Sales Rep for Details. • Leasing Terms Available.† Ask Your AutoZone® Commercial Sales Manager.





A Full Line of Lifts Available from



Quick Rise 2 Post

CL10 Versymmetric® 10,000 Lbs. 2 Post Dual Pendant Controls QuickCycle™ Lift

- SKU 851780  
CHL10V3DPCQC
- 6,069<sup>99</sup>
- Featuring Dual Pendant Control System – Operate Lift from Either Column
  - Versymmetric 3-Stage Front and 3-Stage Rear Arms
  - Safely Lift Everything from Small Sedans to Trucks and SUVs
  - Comes Standard with a Full Set of Adapters and Adjustable Foot Pads

Price Does Not Include Vehicles, Installation or Optional Equipment as Shown



Shockwave SPOA10SW 10K 2 Post Lift

- SKU 765481  
ROTSP0A10U705
- 5,779<sup>99</sup>
- 2 Times Faster Rise and Descent
  - 5 HP Motor
  - 110V DC Power with Built-in Battery Charger
  - Spotline Laser with Motion Sensor to Aid in Centering Vehicle
  - Baseplate Covers Included

Price Does Not Include Vehicles, Installation or Optional Equipment as Shown



2 Post Lifts – 15K-18K Lbs.

E15 15,000 Lb. Symmetric 2 Post Lift

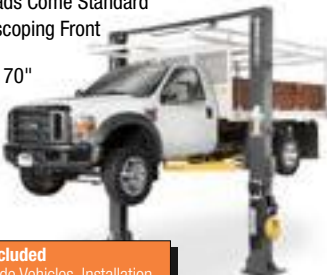
- SKU 814188  
CHLE15
- 7,149<sup>99</sup>
- Heavy-Duty 2-Stage Telescoping Arms
  - Adjustable Column Height
  - Padded Overhead Shut Off System
  - Rubber Door Guards
  - Plated Arm Restraints and Arm Pins



Truck Adapters Included  
Price Does Not Include Installation or Optional Equipment as Shown

15,000 Lbs. 2 Post Lift, Clearfloor, Standard Arms

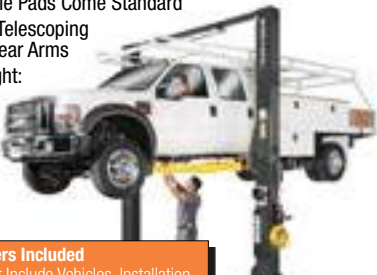
- SKU 296916  
BENXPR-15CL
- 7,929<sup>99</sup>
- Taller Column Height Provides Greater Overhead Clearance
  - Versatile Drop-in Contact Pads with Stackable 8 Piece Truck and Van Adapters
  - Frame Cradle Pads Come Standard
  - Two-Stage Telescoping Front and Rear Arms
  - Overall Height: 170"
  - Inside Columns: 120"



Truck Adapters Included  
Price Does Not Include Vehicles, Installation or Optional Equipment as Shown

18,000 Lbs. 2 Post Lift, Clearfloor, Standard Arms

- SKU 296884  
BENXPR-18CL
- 8,919<sup>99</sup>
- Taller Column Height Provides Greater Overhead Clearance
  - Versatile Drop-in Contact Pads with Stackable 8 Piece Truck and Van Adapters
  - Frame Cradle Pads Come Standard
  - Two-Stage Telescoping Front and Rear Arms
  - Overall Height: 170"
  - Inside Columns: 120"



Truck Adapters Included  
Price Does Not Include Vehicles, Installation or Optional Equipment as Shown

15000-3S 15K Lb 2 Post Lift with 3-Stage Arms

- SKU OUTSIDE BUY/EPO  
CHL15000-3S
- 13,039<sup>99</sup>
- 3-Stage Front and 3-Stage Rear Arms
  - Lower Profile Pad Adapters
  - Single Point Air Actuated Lock Release
  - Rise Height: 81 1/4"
  - Column Height: 174"



Available via Outside Buy/EPO,  
Call 1-877-298-6651  
for Ordering Instructions

Price Does Not Include Vehicles, Installation or Optional Equipment as Shown

2 Post Floor Plate Lifts

D-9/X 9,000 Lbs. 2 Post Lift

- SKU 186430  
DAN1375646
- 2,699<sup>99</sup>
- Perfect for Shops and Garages with Height Restrictions
  - Truck and Van Adapter Set Included
  - Overall Height: 113"



Price Does Not Include Vehicles, Installation or Optional Equipment as Shown

CLFP9 9,000 Lbs. Floor Plate 2 Post Lift

- SKU 851779  
CHLCLFP9
- 3,379<sup>99</sup>
- 3-Stage Front and Rear Arms Provide Excellent Reach to Lift a Variety of Vehicles
  - Drive-Thru Clearance: 98-3/16"
  - Minimum Ceiling Height: 121-7/8"
  - Double Telescoping Screw Pads Adjust to Multiple Heights Minimizing the Need for Adapters



12,000 Lbs. Floorplate, Direct-Drive 2 Post Lift

- SKU 297199  
BENXPR-12FDL
- 4,499<sup>99</sup>
- Open-Top Eliminates Overhead Obstruction
  - Versatile Drop-in Contact Pads with Stackable 8-Piece Truck and Van Adapters
  - Frame Cradle Pads Come Standard
  - Triple-Telescoping, Low-Profile Arms
  - Overall Height: 144"
  - Inside Columns: 118"



Truck Adapters Included  
Price Does Not Include Vehicles, Installation or Optional Equipment as Shown

2 Post Lift Accessories

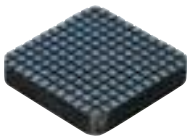
Rubber 2 Post Lift Pad/Slip Over/Round - 1 Each

- SKU 343396  
BEN5715017
- 19<sup>99</sup>
- Slip Over Rubber Lift Pad for Use with BendPak 2 Post Lifts with Round Flat Contact Pads (Sold Individually)



Square Rubber Arm Pads - 1 Each

- SKU 898880  
BEN5715365
- 19<sup>99</sup> Each
- Works with Any BendPak 2 Post Lift
  - 5-5/8" Square
  - 1-1/16" Thick



Frame Cradle Pad - 1 Each

- SKU 466304  
BEN5215506
- 49<sup>99</sup>
- Works with Any BendPak 2 Post Lift
  - Tactile Rubber Mat Reduces Slippage and Protects Finish



Round Rubber Lift Pad Assembly Drop-In - 1 Each

- SKU 343397  
BEN5215507
- 49<sup>99</sup>
- Works with Any BendPak 2 Post Lift
  - 1 Lift Pad, Sold Individually
  - 5" Diameter for Enhanced Stability
  - Easy Drop-in Design



Dannmar Frame Cradle Pad - 1 Each

- SKU 289999  
DAN119527
- 69<sup>99</sup>



I10 2 Post Carriage Door Bumper Kit

- SKU 568451  
FORTPB10-D1
- 61<sup>99</sup>
- Use with Forward FORI10



I10 Rubber Adapter Pad Kit

- SKU 568440  
FOR994105
- 65<sup>99</sup>
- Use with Forward FORI10
  - Eliminates Metal to Metal Contact at Vehicle Lift Points
  - Includes (4) Pads and Attaching Hardware



I10 2 Post Lift Adjustable Adapters - Set of 4

- SKU 568450  
FORT100285
- 384<sup>99</sup>
- Use with Forward FORI10
  - Included Rubber Pad Eliminates Metal to Metal Contact
  - Adapters Designed to Cradle Frames



Don't Let the Tire Make You Tired!

Omega Wheel Arm™

- SKU OUTSIDE BUY/EPO  
OMG92100
- 89<sup>99</sup>



- Holds the Tire at Lift Arm Height and is Handy with Tire Rotations and Brake Jobs
- Easy and Safe for Mechanics to Put On or Take Off Tires
- Avoid Bending Over to Put Down or Pick Up a Tire
- Fits Most Lift Arms 3" - 5" Wide
- Set Includes (2) Wheel Arms and (2) Magnetic Tool Trays



Includes: 2 Round Magnetic Trays

Price Does Not Include Tires or Rims as Shown While Supplies Last

Available via Outside Buy/EPO,  
Call 1-877-298-6651  
for Ordering Instructions



# AUTOMOTIVE LIFTS



A Full Line of Lifts Available from



## AC HYDRAULIC ROLLING JACK WORKS WITH MOST LIFTS



### SD26PHL 5,700 Lbs. Air-Hydraulic Jacking Beam

SKU 912323  
ACHSD26PHL **1,999<sup>99</sup>**

- Reliable and Quiet Pump for Quick and Efficient Lift
- Closed Height: 7.09"

- Flexible Top Support Beam Can be Extended Up to 63.39"
- Unique Height Adjustable Support Arm System – Designed to Fit All Current Lifts and Pits
- Two-Hand Lowering Operation with Dead Man's Release

- Includes 3 Extension Sets and Rubber Cushion for Protection of Car Body
- Automatic Safety Locking Device and Overload Valve



### Support Arms for SD26PHL Beam

SKU 912317  
ACHSUPPARMS **199<sup>99</sup>**

Must Purchase Support Arms - ACHSUPPARMS



## 4 Post Lifts

### Major D-12™ 12,000 Lbs. 4 Post Lift

SKU 343410  
DAN1375681 **3,949<sup>99</sup>**

- Single Hydraulic Cylinder Mounted Underneath Runway
- Internal "Anti-Sway" Slider Blocks in Each Column
- Oversized Self-Lubricating Cable Rollers
- Multi-Position Safety Locks in Each Column
- Push-Button Safety Release
- Runways Adjust for Different Tread Widths



Rolling Jacks Sold Separately  
Price Does Not Include Vehicles, Installation or Optional Equipment as Shown

### 14,000 Lbs. 4 Post Lift

SKU 898152  
BENHDS14 **4,569<sup>99</sup>**

- Overall Width: 130"
- Overall Length: 241"
- Max. Rise: 70"
- Motor: 220 VAC/1 Ph



Shown with Optional Equipment

Rolling Jacks Sold Separately  
Price Does Not Include Vehicles, Installation or Optional Equipment as Shown

## 4 Post 6,000 Lbs. Rolling Bridge Jack DRJ-6

SKU 343411  
DAN1375901 **1,159<sup>99</sup>**

Optional Equipment



## 7,000 Lbs. Capacity Rolling Bridge Jack

SKU 949548  
BENRB7000 **1,369<sup>99</sup>**

Optional Equipment



### 14,000 Lbs. 4 Post Lift

SKU 696483  
FORCR14N100 **4,499<sup>99</sup>**

- Heavy Duty Hydraulic Cylinder
- Single Point Latch Release System
- 78-3/4" Rise
- 18 Lock Positions
- Accommodates 182-1/2" Wheelbase Vehicles
- High Performance Cable and Sheave System
- ETL Certified



Rolling Jacks Sold Separately  
Price Does Not Include Installation or Optional Equipment as Shown

### Challenger 4P14 14,000 Lbs. 4 Post Lift

SKU 851781  
CHL4P14EFX **4,929<sup>99</sup>**

- Louvered Approach Ramps for Positive Vehicle Traction
- Adjustable Runways to Accommodate a Variety of Tread Widths
- Column Height: 90-1/2"
- Minimum Bay Size: 12' x 24'



Rolling Jacks Sold Separately  
Price Does Not Include Installation or Optional Equipment as Shown

### 18,000 Lbs. 4 Post General Service Lift

SKU 568426  
FORCR18 **8,199<sup>99</sup>**

- Max. Wheelbase: 194"
- Durable Cable and Sheave System
- ETL Certified to ANSI/ALI ALCTV: 2011



### 18,000 Lbs. Long Wheelbase 4 Post Lift

SKU 568427  
FORCR18LW **9,099<sup>99</sup>**

- Max. Wheelbase: 230"

Rolling Jacks Sold Separately  
Price Does Not Include Vehicles, Installation or Optional Equipment as Shown

## 7,000 Lbs. Rolling Jack

SKU 568445  
FORRRJ70G **2,149<sup>99</sup>**

Optional Equipment



## 7,500 Lbs. Rolling Jack

SKU 264847  
CHLRJ75 **2,249<sup>99</sup>**

Optional Equipment



## 9,000 Lbs. Rolling Jack

SKU 568446  
FORRJ901000 **3,159<sup>99</sup>**

Optional Equipment



**SAVE \$1,079<sup>99</sup>**  
With Purchase of a Forward Lift

### Two 7,000 Lbs. Rolling Jacks

- SKU 434708  
FORRRJ70GB0GO **3,219<sup>99</sup>**
- Great Savings - Buy 1st FORRRJ70G at Regular Price, Get the Second One 1/2 Price
  - Includes (2) Air/Hydraulic Rolling Jacks with (4) 3" Stack Adapters



**SAVE \$1,129<sup>99</sup>**  
When Purchased with a 4P14 Challenger Lift

### Two 7,500 Lbs. Rolling Jacks

- SKU 851169  
CHLRJ75B0GO **3,369<sup>99</sup>**
- Great Savings - Buy 1st CHLRJ75 at Regular Price, Get the Second One 1/2 Price
  - Includes (2) Air/Hydraulic Rolling Jacks with (4) 3" Stack Adapters



**SAVE \$1,579<sup>99</sup>**  
With Purchase of a Forward Lift

### Two 9,000 Lbs. Rolling Jacks

- SKU 435068  
FORRJ9010B0GO **4,739<sup>99</sup>**
- Great Savings - Buy 1st FORRJ901000 at Regular Price, Get the Second One 1/2 Price
  - Includes (2) Air/Hydraulic Rolling Jacks with (4) 3" Stack Adapters



## Storage Lifts

### Commander D-7

SKU 186464  
DAN1375643 **2,519<sup>99</sup>**

- Spring-Loaded Safety Locks on Each Column
- Self-Lubricating UHMW Polyethylene Internal Slide Blocks
- Single Safety Lock Release Handle
- 7,000 Lbs. Capacity Free Standing Design
- Detachable Drive-Up Ramps Included



Rolling Jacks Sold Separately  
Price Does Not Include Vehicles, Installation or Optional Equipment as Shown

### 8,000 Lbs. EFP8 Home Storage 4 Post Lift

SKU 818781  
FOREFP8P000M **2,779<sup>99</sup>**

- Perfect for Home Use
- Includes: Steel Approach Ramps, Jack Tray, Wheel Caster Kit and Drip Trays
- Wired to Plug into 115V Receptacle



Rolling Jacks Sold Separately  
Price Does Not Include Vehicles, Installation or Optional Equipment as Shown

### 9,000 Lbs. 4 Post Lift

SKU 898142  
BENHD-9 **2,979<sup>99</sup>**

- Overall Width: 116-3/4" (2,965 mm)
- Overall Length: 200" (5,080 mm)
- Column Height: 88" (2,235 mm)
- Max. Lifting Height: 74-1/2" (1,892 mm)



Rolling Jacks Sold Separately  
Price Does Not Include Vehicles, Installation or Optional Equipment as Shown

## Jack Platform

SKU 186438  
DAN119442 **159<sup>99</sup>**

Optional Equipment



## 3,500 Lbs. RJ35BK Hand Pump Rolling Jack

SKU 818764  
FORRJ35BK **799<sup>99</sup>**

Optional Equipment



## 4,500 Lbs. Capacity Rolling Bridge Jack

SKU 949556  
BENRBJ4500 **1,179<sup>99</sup>**

Optional Equipment



## 4 Post Lift Accessories

### 2 Drip Trays

SKU 301768  
BEN5700301 **59<sup>99</sup>**



### Caster Wheel Set

SKU 898905  
BEN5210997 **279<sup>99</sup>**

- For Use on HD-9 Series Lift Only



### Rolling Oil Drain

SKU 898714  
BENDP-30 **349<sup>99</sup>**

- Adjustable Width: 33" - 60"
- 15 Gallon Capacity



- Free Delivery in 48 Continental United States
- Specifications Subject to Change without Notice or Liability. Prices Do Not Include Vehicles, Installation or Optional Equipment as Shown.
- Customers Responsible for Off-Loading Equipment Upon Arrival. Ask Your Sales Rep for Details.
- Leasing Terms Available.† Ask Your AutoZone® Commercial Sales Manager.





Lift Accessories

Air/Electric Workstation for 2 and 4 Post Lift

SKU 751635  
DAN1980999

239<sup>99</sup>

- Add 20 Amp Outlets, Air Functionality and Tool/Line Holders by Attaching This Workstation to Your 2 and 4 Post Lift

BendPak

Air/Electric Workstation

SKU 898684  
BENWSA-100

299<sup>99</sup>

- Adds Air and Electric Capabilities to Any BendPak Lift Simple
- Safe and Extremely Easy-to-Use
- (4) 110V GFI Outlets, Oilier, Air Supply, Pressure Gauge, Storage Hooks for Hose and Tools, Regulator/Filter, Air Inlet
- Fits 2 or 4 Post Lifts

You Will Need to Know BendPak Lift Model # When Ordering

CL Challenger Lifts

Air/Electric Workstation for 4 Post Lifts

SKU 263294  
CHL10310

379<sup>99</sup>

- Convenient Power Source for Extension Lights and Other Tools
- Air Supply Will Always Be at Arms Reach for Facilities Using Pneumatic Tools Such as Impact Wrenches

FORWARD LIFT

Air/Electric Workstation

SKU 568448  
FOR991359

499<sup>99</sup>

- Use with Forward FOR110
- Air/Electric Workstation with Air Regulator and Oilier

Does Not Include Hose and Air Gun

Double Scissor

10,000 Lbs. Dual Scissor Lift

SKU OUTSIDE BUY/EPO  
AMM4TS10SSOR1

10,199<sup>99</sup>

- Min. Height: 8.3", Max. Height: 79.5"
- Compact Footprint: 81.9" (W) x 160" (L)
- Minimum Ceiling Height: 10'
- Ideal for Compact Cars and Light Duty Trucks
- Low Profile Ramps

Offloading Service  
AMMOFFLOAD

150<sup>00</sup>

Available via Outside Buy/EPO,  
Call 1-877-298-6651 for Ordering Instructions  
Price Does Not Include Vehicles, Installation or Optional Equipment as Shown

Mid-Rise Lifts

Dannmar

Cadet-6000XL

SKU 555446  
DAN1375652

1,849<sup>99</sup>

- For Servicing Light-Duty Cars and Trucks
- Portable Motor Cart Serves as Tow Handle
- Adjustable Arm Assemblies
- Safety Bar with Multiple Lock Positions

Lift Gate Service

SKU 262534  
DANLIFTGATE

100<sup>00</sup>

Price Does Not Include Vehicles, Installation or Optional Equipment as Shown

FORWARD LIFT

6,000 Lbs. Mid-Rise Lift

SKU 499655  
FOR6000MRL

1,959<sup>99</sup>

- Width: 41"
- Rise: 52"
- Length: 83"
- Multiple Locking Positions
- Truck Adapters Included

Lift Gate Service

SKU 626137  
FORLIFTGATE

95<sup>00</sup>

Price Does Not Include Vehicles, Installation or Optional Equipment as Shown

DID YOU KNOW?

AutoZone® has multiple financing options for large tool or equipment purchases to include Leasing and/or interest free Extended Payment options.

Contact Your AutoZone Commercial Sales Manager for Details

BendPak

6,000 Lbs. Portable Mid-Rise Lift

SKU 210386  
BENMD-6XP

2,079<sup>99</sup>

- Portable, Easy to Move from Bay-to-Bay
- Adjustable Arms

Power Unit Plugs into 110v Outlet

Lift Gate Service

SKU 262533  
RANLIFTGATE

135<sup>00</sup>

Price Does Not Include Vehicles, Installation or Optional Equipment as Shown

CL Challenger Lifts

6,000 Lbs. Portable Mid Rise Lift

SKU 264835  
CHLQMR6

2,099<sup>99</sup>

- Rise Height: 53-1/4"
- Includes Both 3" and 6-7/8" Adapters

Lift Gate Service

SKU 295540  
OEMLIFTGATE

80<sup>00</sup>

Price Does Not Include Vehicles, Installation or Optional Equipment as Shown

BendPak

6,000 Lbs. Low-Rise Pad Lift

SKU 210383  
BENLR-60

1,729<sup>99</sup>

- Max. Height: 26"
- Overall Width: 70"
- Overall Length: 82"

Lift Gate Service

SKU 262533  
RANLIFTGATE

135<sup>00</sup>

Price Does Not Include Vehicles, Installation or Optional Equipment as Shown

Portable

SKU 210384  
BENLR-60P

1,749<sup>99</sup>

- Max. Height: 26"
- Overall Width: 70-1/2"
- Overall Length: 82"

FORWARD LIFT

7,000 Lbs. Low-Rise Pad Lift

SKU 568436  
FORTL07

2,369<sup>99</sup>

- Wired to Plug into 115V Receptacle
- Max. Rise: 21-3/4"

Lift Gate Service

SKU 626137  
FORLIFTGATE

95<sup>00</sup>

Price Does Not Include Installation or Optional Equipment as Shown

BendPak

10,000 Lbs. Low-Rise Pad Lift

SKU 479989  
BENLR-5T

2,889<sup>99</sup>

- Max. Height: 23" - 32"
- Lowered Height: 4"
- Lift Blocks Included

Lift Gate Service

SKU 626137  
FORLIFTGATE

95<sup>00</sup>

Price Does Not Include Installation or Optional Equipment as Shown

QuickJack™ Lifts

5,000 Lbs. QuickJack™ Car Jack Support System

SKU 850896  
RANBL5000SLXA (110V AC)

1,349<sup>99</sup>

- Complete Package Includes:  
(2) Jack Frame Assemblies,  
(2) 150" Hydraulic Hoses,  
(2) 14" Aux. Hoses,  
(2) Quick-Mount Handles,  
(4) 1.5" X 3" X 4" Rubber Lifting Blocks,  
(4) 3" X 3" X 4" Rubber Lifting Blocks,  
(1) Mini Hydraulic Power Unit with Pendant Control

3,500 Lbs. QuickJack™

SKU 850894  
RANBL3500SLXA (110V AC)

1,129<sup>99</sup>

7,000 Lbs. QuickJack™

SKU 850897  
RANBL7000SLXA (110V AC)

1,499<sup>99</sup>

12V DC Option Available

QUICKJACK™

QuickJack™ SUV and Light Truck Adapters

SKU 862288  
RAN5150561

249<sup>99</sup>

- Set of 12 Pieces
- Fits BL-5000 and BL-7000 Series
- Complete Kit Includes: (4) Low-Profile Round Polyurethane Contact Pads (4) Sliding Receivers Accommodate the Round Polyurethane Contact Pads (4) 3" Stackable Adapters

SPECIFICATIONS:	BL-3500SLX	BL-5000SLX	BL-7000SLX
Weight Capacity / Pair	3,500 Lbs. / 1588 kg.	5,000 Lbs. / 2268 kg.	7,000 Lbs. / 3175 kg.
Individual Frame Weight:	60 Lbs. / 27 kg.	76 Lbs. / 34 kg.	91 Lbs. / 41 kg.
Platform Lifting Height (Frame Only)	16.5" / 419 mm.	17.2" / 437 mm.	17.7" / 450 mm.
Platform Lifting Height (W/Blocks)	20" / 508 mm.	22.5" / 572 mm.	21.2" / 538 mm.
Minimum Collapsed Height	3" / 76 mm.	3" / 76 mm.	3.5" / 89 mm.
Rubber Block Position Min	26.7" / 678 mm.	31.5" / 800 mm.	31.5" / 800 mm.
Rubber Block Position Max	50.5" / 1283 mm.	60" / 1524 mm.	60" / 1524 mm.
Frame Width	10.5" / 267 mm.	11" / 278 mm.	12.5" / 318 mm.
Frame Length	62" / 1575 mm.	72.5" / 1841 mm.	72.5" / 1841 mm.
Lifting Time	10 seconds	15-30 seconds	15-30 seconds

Motorcycle Lifts

FORWARD LIFT

Motorcycle Jack

SKU 568452  
FORBJ10

184<sup>99</sup>

- Use with Forward FOR100MCL

FORWARD LIFT

1,000 Lbs. Air Operated Motorcycle Lift

SKU 499659  
FOR1000MCL

978<sup>99</sup>

- Includes Wheel Vise and Two 12" Extensions, Making it Great for Motorcycles, ATVs, Lawn Mowers, Golf Carts, etc.
- Rise 33", Length 93", Width 24", Width with ATV Adapters 48"

Lift Gate Service

SKU 626137  
FORLIFTGATE

95<sup>00</sup>

Price Does Not Include Vehicles, Installation or Optional Equipment as Shown

FORWARD LIFT

1,000 Lbs. Droptail Motorcycle Lift

SKU 568439  
FOR1000MCLDT

1,139<sup>99</sup>

- FORBJ10 Included
- Rise 33" Length 93", Width 24"

Lift Gate Service

SKU 626137  
FORLIFTGATE

95<sup>00</sup>

Price Does Not Include Vehicles, Installation or Optional Equipment as Shown

Ranger

Motorcycle Lift

SKU 626120  
RANRML-1500XL

1,449<sup>99</sup>

- Lifting Capacity: 1,500 Lbs. (682 kg)
- Power Supply: Air/Hydraulic
- Main Platform Length: 89" (2,286 mm)
- Main Platform Length with Front Extension: 102" (2,591 mm)
- Main Platform Width: 30" (762 mm)

Lift Gate Service

SKU 262533  
RANLIFTGATE

135<sup>00</sup>

Price Does Not Include Vehicles, Installation or Optional Equipment as Shown

Prices subject to change without notice. Please do not return purchases to the store. For information regarding warranty or repair and/or any questions or concerns, please call 1-877-AZTOOL1.

33