



Oil and Lube

Tech Set

Lube Starter Set

SKU 227302
 24965 **1,349⁹⁹**

Tool Storage

• 4 Drawer Service Cart

Hand Tools

- Universal Joints: 1/4" and 3/8"
- Adapters 1/2" F X 3/8" M, 3/8" F X 1/2" M, 3/8" F X 1/4" M and 1/4" F X 3/8" M
- 1/4" Extensions: 2", 4" and 6"
- 3/8" Extensions: 1-3/4", 3", 6" and 10"
- 1/4" Ratchet
- 3/8" Ratchets: Regular and Flex
- Breaker Bars: 3/8" and 1/2"
- Star Screwdrivers: T8-T25
- Pocket Screwdriver Set
- Combination Wrenches Metric: 8-19mm
- Combination Wrenches SAE: 1/4" - 7/8"
- Locking Pliers: 7", 10" Curved Jaw and 6-1/2" Long Nose
- Pliers: 6" Slip Joint; 6" and 10" Groove Joint; 6-1/2" Diagonal Cutters and 6" Needle Nose
- Adjustable Wrenches: 6", 8" and 12"
- 1/4" Metric Sockets Shallow: 5 - 15mm
- 1/4" SAE Sockets Shallow: 3/16" - 9/16"

We have put together the most common tools used for oil change and general maintenance and put them in a great looking 4 drawer cart. This set is designed for the quick service technician to perform basic fluid, tire and battery maintenance.

- 3/8" Metric Shallow: 8 - 19mm
- 3/8" SAE Shallow: 1/4" - 7/8"
- 8 Pc OEM Screwdriver
- 11 Piece Star Set: T8-T50

Oil Change

- Swivel Oil Filter Wrench: 3 7/16 - 3 3/4"
- Toyota Oil Cap Wrench
- Oil Filter Pliers: 2-1/2" - 4-5/8"
- Large Oil Filter Pliers: 4-3/4" - 6"
- Swivel Handle Wrench: 2-3/4" - 3-1/4"
- 10 Piece Cap Wrench Set
- 7 Piece Filter Cap Socket Set
- Filter Strap Wrench
- Multi Purpose Funnel

Battery Tools

- Battery Terminal Spreader
- Side Terminal Battery Wrench
- Battery Terminal Brush
- Battery Carrier
- Battery Terminal Puller

Tire Tools

- Dual Foot Inflator & Gauge
- Tire Gauge, 50 PSI
- Digital Tread Depth Gauge

Miscellaneous

- LED Flashlight
- 40 LED Cordless Worklight
- Hot Sleeve
- Telescopic Magnetic Pick-Up Tool
- 3 Piece Dead Blow Hammer Set
- Fender Cover
- Safety Glasses



*While Supplies Last

Oil Filter Crusher

Industrial 10-Ton Oil Filter Can Crusher

SKU 990215
 RANRP20FC
1,195⁰⁰

- Reduces the Size of Used Oil Filters to One Fourth of Their Original Size. An Integrated Collection Chamber and Collector Down-Spout Tube Allows Quick Recovery of the Oil for Easy Disposal to a Drum or Bulk Container
- Save on Disposal Costs and Storage Space
- Fulfills EPA and Other Mandated Environmental Standards
- Reduce Filter Size By 75% and Remove Over 95% of the Residual Oil
- 12-1/2" Diameter Cylinder Provides 20,000 Lbs. Crushing at 175 PSI



Automatic Transmission Service Equipment



Transmission Fluid Exchange

- On Board Battery
- No Co-Mingling of New and Used Fluids
- Power On/Off Switch Prevents Battery Arching Hazard
- Level Sensor Technology, Never Needs Calibration
- Precise Fluid Measurement to the Tenth of a Quart
- High Output, Controlled Drainage at 3 Gallons Per Minute
- 32 Quart New and Used Fluid Tanks
- External Mounted Filter for Easy Maintenance

ATF1

SKU 112434
 SYM30110000

4,799⁹⁹

- Cooler Line and Dipstick Modes of Operation
- Adapter Kit Included

ATF2

SKU 112457
 SYM30120000

3,999⁹⁹

- Dipstick Mode of Operation



Automatic Transmission Fluid Exchanger

SKU 534584
 RTIATX-2 **3,699⁹⁹**

Fast, Automatic and Accurate Fluid Exchange!

- Digital Weight Scale
- Multi-Fluid Capability
- Fast 2-5 Minute Average Exchange; Fluid-Flow Direction Indicated
- Diagnostic Pressure Gauge



Transmission Fluid Exchanger

SKU 221189
 92500 **4,099⁰⁰**

Three Modes of Operations: Dipstick Only, Cooler Line, or a Combination Of The Two!

- Exchange Accuracy Approximately +/- 1/4 Qt.
- 32-Quart Supply Tank; 34-Quart Waste Tank
- Complete Set Of Cooler Line Adapters for Most Foreign and Domestic Vehicles



ATF Adapter Kit

SKU 972278
 MITMVA7216 **160⁹⁹**

- Quick-Change Coupler Allows Fast Adapter Changes and Brass Ball Valve Controls the Flow of Fluid
- Ten (10) Adapters Fit Ford, Toyota, BMW, Honda, Nissan, VW, Audi and Mercedes Transmissions
- Connects Directly to MV7201 Fluid Evacuator Plus

Automatic Transmission Refill System

SKU 265092
 MITMV6410 **288⁹⁹**

- Dispenses Fluids Under Pressure for Continual Flow to Top-Off or Refill Sealed Automatic Transmissions
- Includes: Reservoir Lid With Integrated Manual Pump, Pressure Gauge, and Pressure Relief Valve, 5' Fluid Dispensing Hose, MVA5800 ATF Refill Adapter Kit, Fluid Dispensing Wand and Hanging Hook



SAVE \$14.99

OEM Toyota/Lexus Oil Filter Cap Wrench Set

SKU 383457
 25409 **39⁹⁹**

- Sizes: 64mm, 73mm and 74mm *While Supplies Last
- Covers all Toyota and Lexus Vehicles from 1980-2009



BONUS Swivel Wrench

(25378) with Purchase of 25409 | SKU 383457

Value: \$14.99



Oil Filter Wrenches



TPR Handle Swivel Oil Filter Wrenches

SKU 965869 **9⁹⁹**

SKU 964999 **9⁹⁹**

SKU 965002 **9⁹⁹**

SKU 965003 **9⁹⁹**

- 1" Wide Stainless Steel Band for Strong Grip
- Dimples in Band Bite into Filter for Non-Slip Removal
- Swivel Handle for Hard to Reach Filters

Oil Filter Pliers

SKU 141500
 25320 **9⁹⁹**

- Slip-Joint Handle 2-1/2" to 4-5/8"
- Jaw Teeth for Sure Grip

SKU 344320
 25449 **16⁹⁹**

- Fits Filters 4-3/4" to 6"

Swivel Jaw Oil Filter Wrench Pliers

SKU 265115
 25321 **39⁹⁹**

- Jaws Swivel 90° and Adjust to 4 Positions in 30°
- Range from 2-1/4" to 4-3/4" (57mm to 120mm)



10 Piece Cap Filter Wrench Set

SKU 900828
 27196 **42⁹⁹**

- 10 - 3/8" Drive Cap Oil Filter Wrenches
- Fits 95% of Domestic and Import Automotive Applications
- Includes: 65/67mm - 14 Flutes 80mm - 15 Flutes 68mm - 14 Flutes 86mm - 16 Flutes 74/76mm - 15 Flutes 93mm - 15 Flutes 76mm - 14 Flutes 93mm - 36 Flutes 76mm - 30 Flutes 100mm - 15 Flutes

Import Oil Filter Wrench

SKU 297190
 25128 **5⁹⁹**

STORE STOCK

- Uses 3/8" Drive
- Fits Oil Filters 2-1/2" to 3-1/8"



3 Legged Filter Wrench

SKU 231212
 25413 **14⁹⁹**

- Range: 2-1/2" - 4-1/2"



3 Legged Filter Wrench

SKU 114009 **9⁹⁹** STORE STOCK

- Fits Import Cars
- Fits Spin-on Filters 2-1/2" - 3-7/8"



32mm Oil Filter Socket

SKU 110281
 25410 **7⁹⁹**

- Removes and Installs Oil Filters on 2.2 Liter GM Ecotec Engines
- Use with 3/8" Drive



36mm Oil Filter Socket

SKU 110279
 25411 **8⁹⁹**



Oil Filter Cap Wrench for Dodge

SKU 222532
 LIS34000 **10⁹⁹**

- Fits Threaded Plastic Oil Filter Caps on Newer Dodge V8 Engines

Volvo/BMW Oil Filter Cap Wrench

SKU 383456
 25408 **19⁹⁹**

- 86.5mm, 16 Flats
- Fits 2006 BMW Series (E90) and all Volvo cars (except 2005 40 and 50 Series) 1999-2005



Toyota Oil Filter Wrench

SKU 978119
 25412 **9⁹⁹**

- 64mm with 14 Flats
- Fits Most Toyota and Lexus Models



3 Piece Low Profile Oil Filter Socket Set

SKU 094803
 27204 **20⁹⁹**

- Includes 27, 32 and 36mm
- 3/8" Drive
- 27mm for Cadillac STS 3.2L and Mercedes Benz 1.8L
- 32mm for GM Ecotec 2.2L and SAAB
- 36mm for BMW M52, M60, M62, M70 and M73, Mercedes Benz OM604, 605 and 606, Audi VR6



Oil and Lube

Oil Drains

OEM TOOLS

8 Gallon Drain

SKU 383454
25896

69⁹⁹

- 8 Gallon Oil Drain



18 Gallon Drain with Pump

SKU 383453
25897

139⁹⁹

- 18 Gallon Drain with Pump



LINCOLN

BONUS Grease Gun
(LIN1142) with Purchase of
LIN3601 | SKU 988882
\$26.99 Value

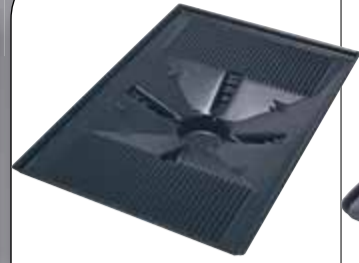
18 Gallon Rolling Oil Drain with Air Evacuation

SKU 988882
LIN3601

216⁹⁹

- All-Steel Design Includes Reinforced Caster Supports
- 14" Telescoping Bowl; Range of 45" to 72"
- Preset Air Regulator (Up to 150 PSI)

Oil Drain Accessories



Super Transmission Drain Funnel

SKU 291377
LIS17902

49⁹⁹

- Extends the Catch Area of Any Lift Drain
- Fits the Ford E 40D



Transmission Drain Funnel

SKU 291376
LIS17892

21⁹⁹

- Extends the Catch Area of Any Lift Drain
- Funnel Size Is 22" x 23"

Truck Drain on Wheels

SKU 291381
LIS19122

- Includes a Snap-In Cover
- Measures 43" x 24-1/2" x 10"
- Use to Drain Large Capacity Crank Cases



Truck / Trailer Wheel Pan

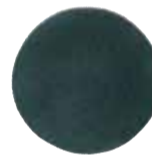
SKU 291383
LIS19852

- Catches Oil from Wheel Hubs After Removing Cap
- Capacity of 88 Ounces
- Handle Compartments Hold Hub Nuts Out of the Oil

No Splatter Pad - 15"

SKU 080548
LIS38750

- Floors and Work Area from Messy Oil Splatter
- Insert Pad in Funnel or Oil Pan Before Oil Change in Transmission Drain Funnels or Larger Oil Drain Pans to Eliminate Oil Splatter
- Porous Material Allows Fluid to Quickly Pass Through Into Funnel or Pan



No Splatter Pad - 22"

SKU 080574
LIS38780

- Protects Floors & Work Area from Messy Oil Splatter
- Insert Pad in Transmission Drain Funnels or Larger Oil Drain Pans, Before Oil Change to Eliminate Oil Splatter
- Porous Material Allows Fluid to Quickly Pass Through Into Funnel or Pan



Packer

Bearing Packer

SKU 900799
25073

- Works on Bearings Up to 3-1/2" O.D.
- Forces Old Grease Out and New In



Plug Pro

Drain Plug Pro™

SKU 112476
5911

- Hot Oil in the Pan - Not on Your Hand
- Remove Oil Drain Plug without Touching the Plug or Hot Oil



- No Touching Hot Plug
- No Hot Oil on Hands
- No Dropping of Plug in Hot Oil
- No Oil Soaked Gloves
- Magnetically Attach Drain Plug Pro™ to Pre-Loosened Drain Plug and Rotate to Remove Plug

Absorbents

PIG® Grippy® Absorbent Mat Rolls, Pads and Toolbox Liners

One-of-a-kind absorbent mat that stays put no matter what™. It reduces slip and trip hazards around workstations, walkways and machinery while it helps prevent liquid from being tracked throughout your plant.

Leak & Drip Mat 32" x 50' Roll

SKU 374620
25800

98⁹⁹

Garage Floor Drip Mat 40" x 32"

SKU 374621
25801

17⁹⁹

Workbench Liner 22" x 7'

SKU 374623
25820

18⁹⁹

Toolbox Liner 22" x 10.625"

SKU 374622
25822

17⁹⁹

Toolbox Liner 22" x 16.375"

SKU 374624
25821

19⁹⁹



Universal Light-Weight Absorbent Drum-Top Pad

SKU 186471
25102

- Precut with Holes for 3/4" and 2" Bungs Provide Perfect Fit on Steel 55-Gallon Drum Tops
- 5 Toppers Per Bag



PIG® Universal Absorbent Sock 3" x 42" Length

SKU 289880
35700

9⁹⁹



PIG® Universal Light-Weight Absorbent Mat Tablet

SKU 186470
25101

- Pop-Up Tabs Let You Hang Tablet Anywhere
- Perforated 14" x 14.25" Pad; 15 Sheets Per Tablet



Universal Light-Weight Absorbent Mat Pad

SKU 186469
25100

64⁹⁹

Universal Medium-Weight Absorbent Mat Pad

SKU 186468
25300

- 15" x 20" Pads; 100 Per Box

Funnels

PIG® Form-A-Funnel® Draining Tool

SKU 186473
18609

- Works in Temperatures from -30°F to 425°F
- Edges Can Be Molded Around Filters or Drains for a Leak-proof Seal
- Stores Flat or Rolls Up
- Great for Draining Oil and Other Fluids from Any Type of Vehicle or Equipment
- 14.5" L x 6.5" W



22" x 8.625" Pig® Form-A-Funnel® Draining Tool for Heavy Equipment, Trucks, Buses

SKU 289879
18714

39⁹⁹



PIG® 9" x 4.75" Small Form-A-Funnel® Draining Tool

SKU 289883
18509

11⁹⁹



"Pig" Universal Absorbent Sock 3" Dia. x 42" Length

SKU 289881
18611

39⁹⁹

Absorbents

MOP 301 Sorbent 1 Lb Box

SKU 125704
MES1MOP301

- Aggressively Absorbs Oil-Based Liquids
- Rejects Water-Based Liquids
- 100% Recycled Materials, 100% Biodegradable
- Effective on Earth, Land, Hard Surfaces and Water
- 1Lb Bag Will Absorb 30 Lbs.



MOP 301 Sorbent 5 Lb Bag

SKU 125701
MESSMOP301

36⁹⁹

- 5Lb Bag Will Absorb 150 Lbs

Gas Caddy

25 Gallon Fuel Chief Steel Gas Caddy

SKU 360585
DOWFC25GC

649⁹⁹

- Makes Fuel Transfer Safe and Easy
- Complies with OSHA guidelines - FM approved
- FM Approved Cast Iron Pump with Carbon Vanes
- Pump - Two-Way Operation for Either Siphoning or Dispensing
- Pump - 1 Gallon for Every 12 Revolutions
- Ground Wire and Clamp
- Fire-Screened Vent and Filler Neck Combination

JohnDow Industries



25 Gallon Fuel Chief Poly Gas Caddy with Heavy Duty Pump

SKU 360658
DOWJDI25GCP1

- 25-Gallon Tank for Fuel Transfer and Storage
- 10" Pneumatic Tires Move Over Almost Any Surface
- Pump - Two-Way Operation for Either Siphoning or Dispensing
- Pump - 1 Gallon for Every 12 Revolutions
- Includes Grounded Suction Hose

Replacement Filter

SKU 360660
DOWGCCF

54⁹⁹

- Replacement Filter for DOWFC25GC and DOWJDI25GCP1

Questions? Call AutoZone®
Tool & Equipment Customer Service:
1-877-AZTool1 (1-877-298-6651)



Oil and Lube

Fluid Evacuators

Fluid Evacuator
SKU 594882
MITMV7400

80⁹⁹

- Integrated 1.9 Gallon (7.3 Liter) Capacity Reservoir
- Large Base with Foot Stabilizer



Fluid Evacuator Plus
SKU 497200
MITMV7201

105⁹⁹

- Integrated 2.3 Gallon (8.8 Liter) Capacity Reservoir
- Large Base with Foot Stabilizer



SpeedyVac Fluid with Evacuation Kit

SKU 361283
PBT70890

119⁹⁹

- Portable Fluid Evacuation Kit for Automotive, Heavy Duty and Industrial Applications
- Vacuum Hold Feature Allows Use Even When Disconnected from the Air Supply
- Automatic Fluid Shut Off Valve to Prevent Overfilling
- Includes: 5.52' Suction Hose Assembly with On-Off Tap, 5/16" X 11.8' Suction Hose 1/4" X 26" Suction Hose, Brake Bleeder Hose Assembly



Pneumatovac Fluid Evacuator

SKU 497203
MITMV7300

118⁹⁹

- Operates on Compressed Air
- 2.3 Gallon (8.8 Liter) Capacity Reservoir
- Large Base with Foot Stabilizer
- Independent Air Shut-Off Valve



Universal Fluid Dispensing System

SKU 265093
MITMV6400

174⁹⁹

- Dispenses Fluids Under Pressure for Smooth, Continual Flow to Fill or Top-Off Master Cylinders, Coolant Bottles, Automatic Transmissions, Differentials, and Power Steering and Other Reservoirs
- Large 1.2-Gallon (5-Liter) Fluid Capacity
- Internal Pump Components are Sealed Against Exposure to Fluids



Grease Guns

Professional Grease Gun

SKU 522902
LIN1142

27⁹⁹

- 3 Way Loading: By Cartridge, Bulk Load and Suction Load
- Rugged Cast Pump Head for Strength and Durability
- Jam Proof Toggle Mechanism Prevents Binding or Accidental Bending of Plunger
- Develops 10,000 PSI Pressure
- Uses Common 14-1/2 Oz.. Cartridges



Professional Lever Action Grease Gun

SKU 094656
25893

29⁹⁹

- Lever Action Handle with Textured Rubber Non-Slip Grip
- 12" Heavy-Duty Nylon Hose with Coupler and Protective PVC Cap
- 5.5" Extension with 1/8" NPT Male Threads
- Working Pressure: 4,500 PSI



Professional Pistol Grip Grease Gun

SKU 094654
25892

29⁹⁹

- Textured Rubber Non-Slip Grip
- 12" Heavy-Duty Nylon Hose with Coupler and Protective PVC Cap
- 5.5" Extension with 1/8" NPT Male Threads
- Working Pressure: 4,500 PSI



Adapter Kit

7 Piece Grease Fitting Adapter Kit

SKU 978118
25711

29⁹⁹

- Includes: Press-on 90° Lube Tool, Straight Extension, 300mm Hose Extension, Slide-on 90° Coupler, Rubber-Tipped Nozzle, Needle Nozzle, 360° Coupler



Professional Grease Gun with 18" Whip Hose and Coupler

SKU 522903
LIN1147

34⁹⁹

- Same as #LIN1142 with 18" Whip Hose and Coupler



Extra Heavy Duty Pistol Grip

SKU 445385
LIN1134

44⁹⁹

- 18" Whip Hose
- Variable Stroke Design
- Includes Rigid Pipe
- 7,500 PSI
- Jam Proof Handle
- Filler Nipple/Bleeder Valve



PowerLuber®

18 Volt PowerLuber® Grease Gun

SKU 988881
LIN1844

309⁹⁹

- Heavy-Duty High-Torque Motor for Superior Performance
- New 18-Volt High-Capacity Battery Delivers Up to 10 Grease Cartridges
- High-Strength Composite Body and Casting Provide Durability without Weight Penalty
- Next Generation "Smart Charger" for Faster Charge Time
- 2-Speed Transmission Provides High-Volume or High-Pressure Output
- Comes with 2 Batteries

SKU 988878
LIN1842

253⁹⁹

- Same as 1844 Kit But With 1 Battery



18 Volt Battery

SKU 970540
LIN1801

79⁹⁹

- Long Life High Capacity 1900 mAh Battery
- Padded Housing with Protected Contacts
- Internally Insulated

Pneumatic PowerLuber®

SKU 445386
LIN1162

84⁹⁹

- Fully Automatic, Continuous Operation
- Accessible Check Valve Assembly
- 30" High-Pressure Hose with Coupler and Attachment Clip
- Pump Ratio: 40:1 at 150 PSI
- Max. Grease Pressure: 6,000 PSI
- Air Pressure Range: 40-150 PSI



12 Volt PowerLuber® Grease Gun

SKU 219686
LIN1242

174⁹⁹

- 6,000 PSI
- High Capacity Ni-Cad 12 Volt Battery
- 30" Flex Hose, Spring Guard and Coupler
- One Hour Smart Charger



12 Volt Battery

SKU 219699
LIN1201

74⁹⁹

- Same as LIN1242 Kit but with 2 Batteries to Reduce Downtime
- High Quality Ni-Cad Rechargeable Battery for PowerLuber

Meters, Dispensers and Pumps

Digital Oil Meter

SKU 383183
LIN982

309⁹⁹

- Large 6 Digit LCD Display with Two Decimal Point Precision
- Measures in Quarts, Pints, Gallons or Liters 13" Flexible Extension with Automatic Nozzle
- Low Battery Indicator
- Built-In Trigger Guard



Manual Gear Lube Dispenser

SKU 174166
LIN1293

61⁹⁹

- 5' Hose 13" Pump Tube
- Fits 30# Containers
- Delivers 1 Oz.. Per Stroke



Grease Pump Package

SKU 110259
LIN6917

774⁹⁹

- Portable 50:1, Air Operated, Double-Acting Grease Pump Ensures High-Output Grease Delivery
- Lube Fitting with Control Valve and Universal Swivel
- Standard Follower Wipes 120 Lbs. Drum Sides Clean and Keeps the Pump Primed
- Four-Wheel Dolly Maneuvers Easily Around Shop
- Drum Not Included



Lever Action Barrel Pump

SKU 970530
LIN1340

41⁹⁹

- Pumps Non Corrosive Fluids, *Not for Gasoline
- Telescoping Tube for 16 to 55 Gallon Drums
- Removable Non-Drip Spout Allows for Threaded Hose Connection



Mechanical Oil Meter

SKU 383184
LIN877

339⁹⁹

- Large 3-1/2" Dial with 1/4 Quart Graduation
- Measures in Quarts 10 Inch Flexible Extension With Automatic Nozzle



Fluid Transfer Pump

SKU 094647
25713

14⁹⁹

- Small and Lightweight
- Pumps Air into Inflatables
- Includes (2) 50" (127 cm) Long Hoses



Heavy Duty Grease Pump for 120 Lbs Drum

SKU 972283
LIN9917

927⁹⁹

- Pumps Twice the Volume of Standard Pumps
- PMV Hi Pressure 50:1 Pneumatic Pump
- Extra Hi Pressure Control Valve
- Drum Not Included



Manual Rotary Pump with Hose for 55 Gallon Drums

SKU 265089
LIN1385H

209⁹⁹

- Fully Serviceable. Includes: Heavy-Duty 8' X 3/4" Anti-Static Hose with Non-Sparking Aluminum Nozzle with Hanger; Seal-Tight Telescoping Pick-Up Tube with Strainer for 16-55 Gallon Drums With 2" Bung and H.D.
- Drum Not Included



8 Qt. Dispenser Lid & Cap

SKU 080078
LIS19702

26⁹⁹

- Now with a Spout Cap and Lid to Keep Out Contaminants. Supersedes 19712
- Our Popular 8 Quart Dispenser With a Spout Cap and Lid to Keep Out Dirt, Dust and Other Contaminants
- Many Large SUVs and Trucks Now Require More Oil



5 Quart Flexible Spout Measuring Can

SKU 298486
LING525

37⁹⁹

8 Quart Flexible Spout Measuring Can

SKU 298473
LING528

37⁹⁹

- Designed for One-Hand Operation
- 14" Flexible Spout with Tapered Tip Swings into the Necessary Angle for Hard-To-Reach Spots
- Recessed Bottom Drains Fully and Guards Against Puncture Rolled-Edge Top Helps Prevent Spilling



Heavy Duty Grease Pump for 120 Lbs Drum

SKU 174148
LIN917

978⁹⁹

- 50:1 Double Acting Pump
- Flexible Follower for Positive Prime
- 7' Hose, Universal Swivel and Control Valve
- 4 Caster Roll-Around Base
- Drum Not Included



Manual Rotary Fuel Pump with Hose for 55 Gallon Drums

SKU 265088
LIN1387

258⁹⁹

- Premium 3 Vane Manual Rotary Pump for a Variety Of Industrial Uses and Most All Fluid Types Including: Gasoline, Diesel, Kerosene, Coolant, Non-Corrosive Materials, Medium Viscosity Petroleum Based Fluids, Hydraulic Oils, ATF
- Drum Not Included

